

State Trust Land Lease

AVAILABLE FOR PUBLIC AUCTION



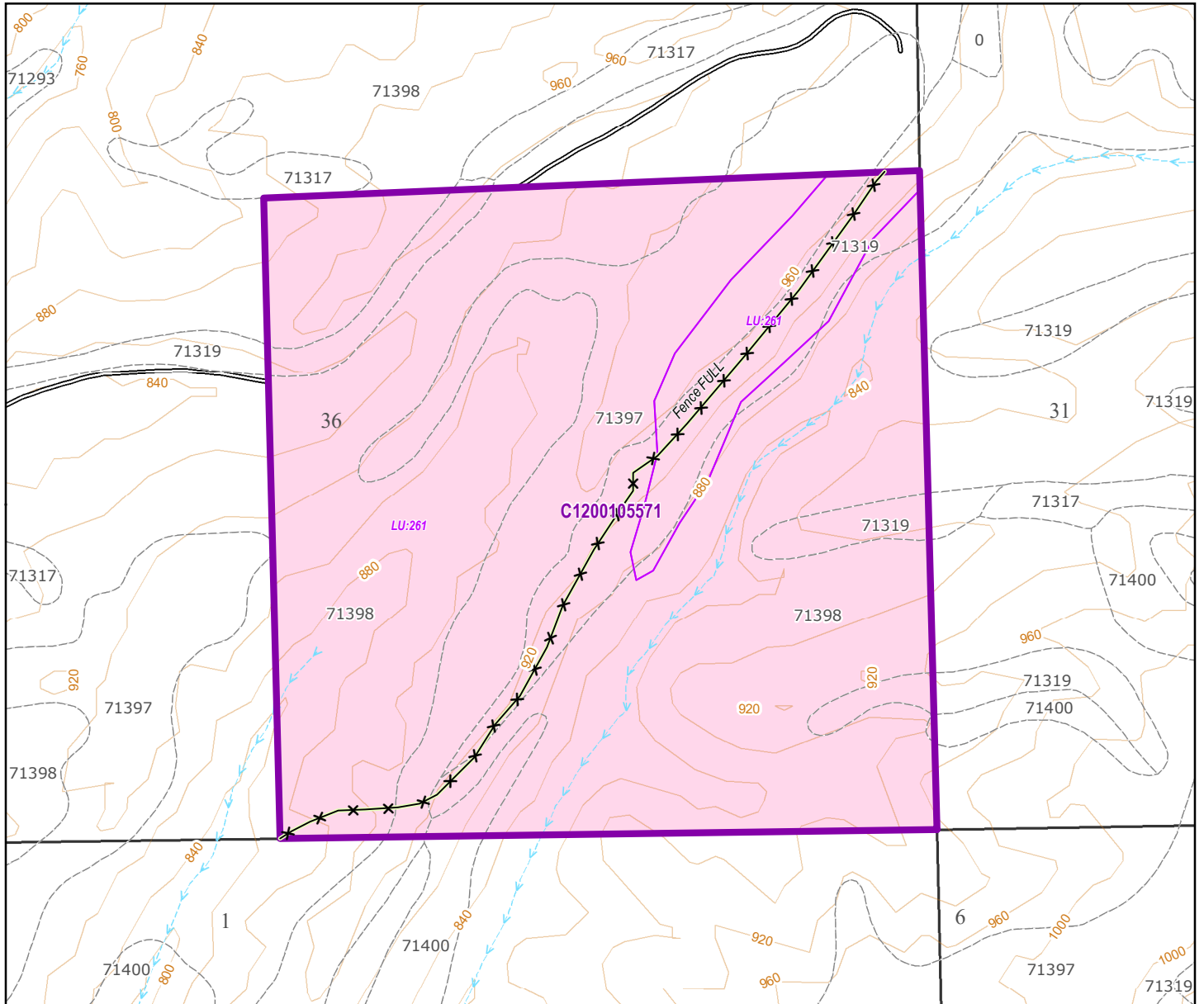
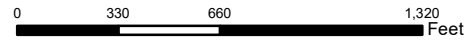
For cartographic display only, DNR reserves the right to revise, edit or otherwise modify.

Lease No. C1200105571

T8-0N R33-0E S36, Walla Walla County

Precipitation Inches/Year: 12-14

14-16



AG lease Future

Fence - FULL

Land Use

261: Agriculture - Conserv. Reserve Program (Withdrawn)

NRCS Soils (MUKEY__MUNAME)

71317_Ellisforde silt loam, 15 to 30 percent slopes

71319_Ellisforde silt loam, 30 to 45 percent slopes

71397_Ritzville silt loam, 0 to 8 percent slopes

71398_Ritzville silt loam, 8 to 30 percent slopes

71400_Ritzville silt loam, 30 to 45 percent slopes