



WASHINGTON STATE DEPARTMENT OF  
**Natural Resources**

---

**Peter Goldmark** - Commissioner of Public Lands

# 2013-2015 TLT Project Status

**Approved for transfer earlier this biennium**

**Mount Si  
Elk River  
Trombetta Canyon  
Lake Spokane  
Pleasant Valley  
Stavis**

**Beausite Lake  
Green River 36  
West Poulsbo  
Klickitat Canyon  
Morning Star**

**For Board Consideration June 2, 2015**

**Spud Mountain**

**Columbia Falls**



# 2013-2015 TLT Project Status

- **Total of 6,295 acres conserved**
- **13 projects**
- **7 natural areas, 4 counties, 1 city, 1 park district**

## Approximate Fund Transfers for 13 projects

Common School Construction Account – Current transfers plus estimate of total future transfers for biennium (81.6%)	\$ 44,376,000
Real Property Replacement Account – Total land transfers	\$ 9,977,200
<b>Total –</b>	<b>\$ 54,353,200</b>



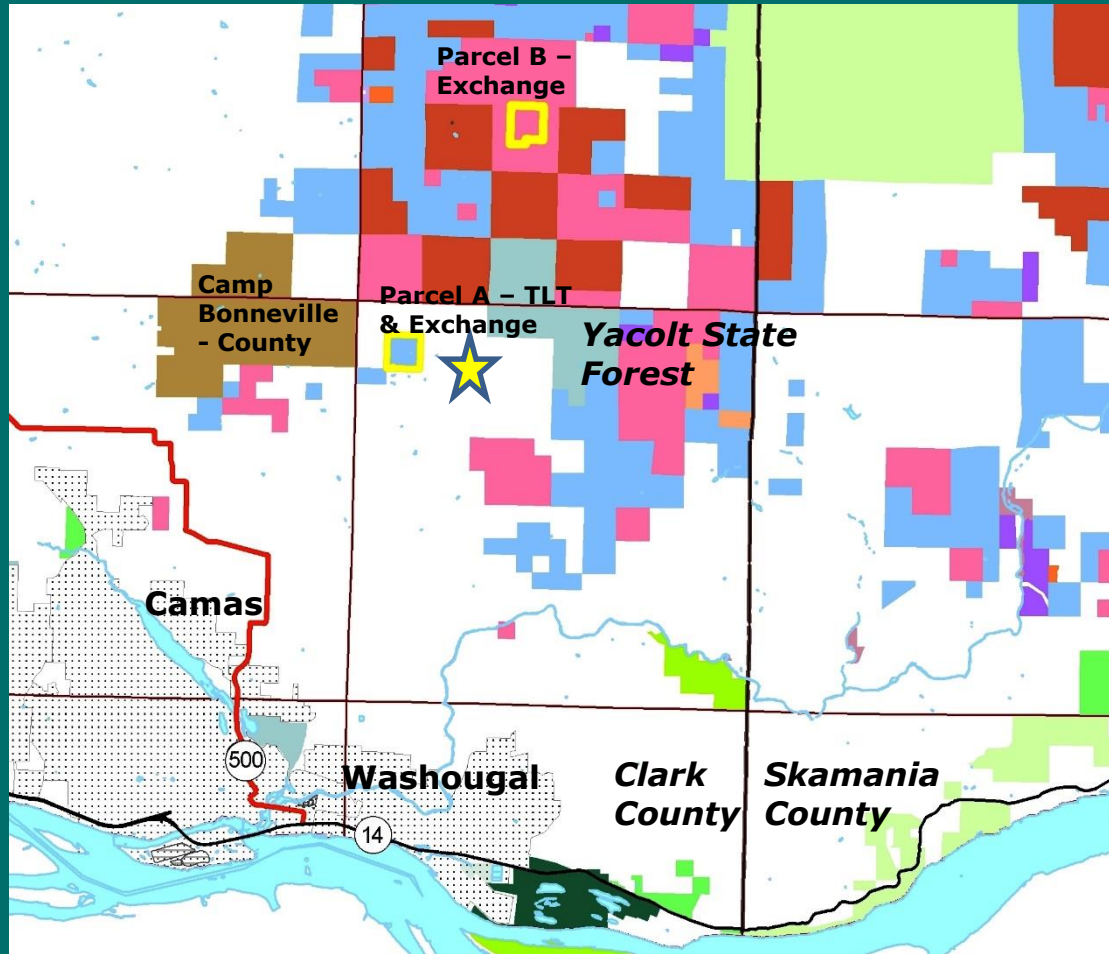
# **Spud Mountain Trust Land Transfer 02-090368**

# **Spud Mountain Inter-Trust Exchange 86-091847**

## **Clark County**



# Spud Mountain Trust Land Transfer



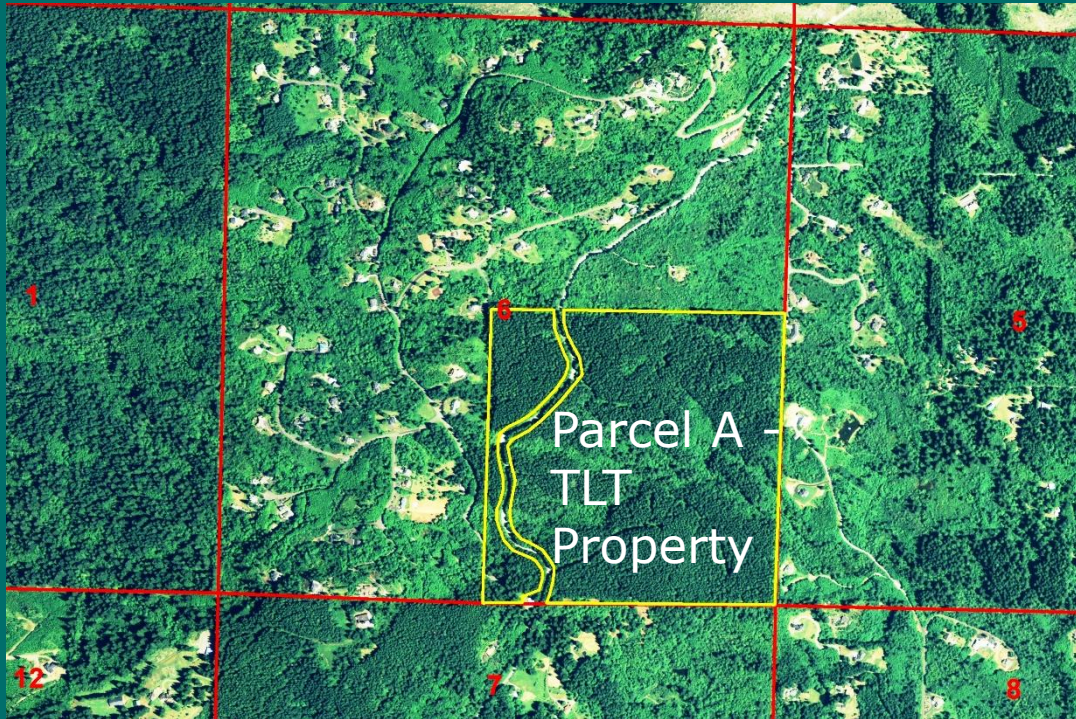
Clark County

North of Camas

Transfer to Clark  
County –  
Environmental  
Services

Recreation, Open  
Space or Wildlife  
Habitat

# Spud Mountain Trust Land Transfer



**Common School at  
time of transfer**

**155.83 acres**

**Rural residential  
area**

**Site Class 2**

**Trees 45-60 years  
old; open grown**



# Spud Mountain Trust Land Transfer

## Appraised Value – Transfer Parcel (Parcel A)

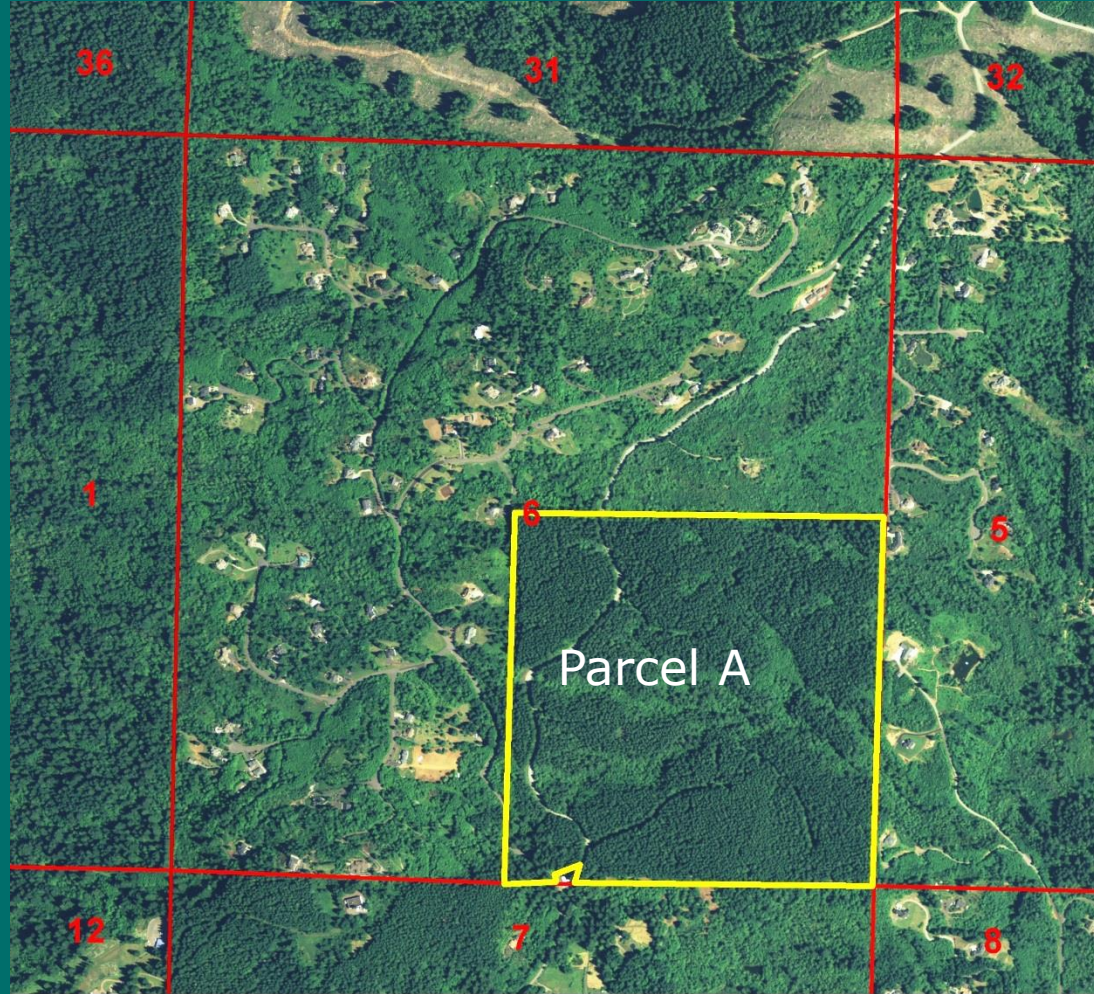
Timber (2,021 Mbf)	\$ 374 /MBF	\$ 755,000
Land (155.83 acres)	\$ 6,032 /acre	\$ 940,000
<b>Total – Parcel A</b>	<b>\$ 10,877/acre</b>	<b>\$ 1,695,000</b>

## Distribution of Funds

**Timber Value - Common School Construction Account**

**Land Value - Real Property Replacement Account**

# Spud Mountain Inter-Trust Exchange



**Parcel A –  
Exchange and  
TLT**

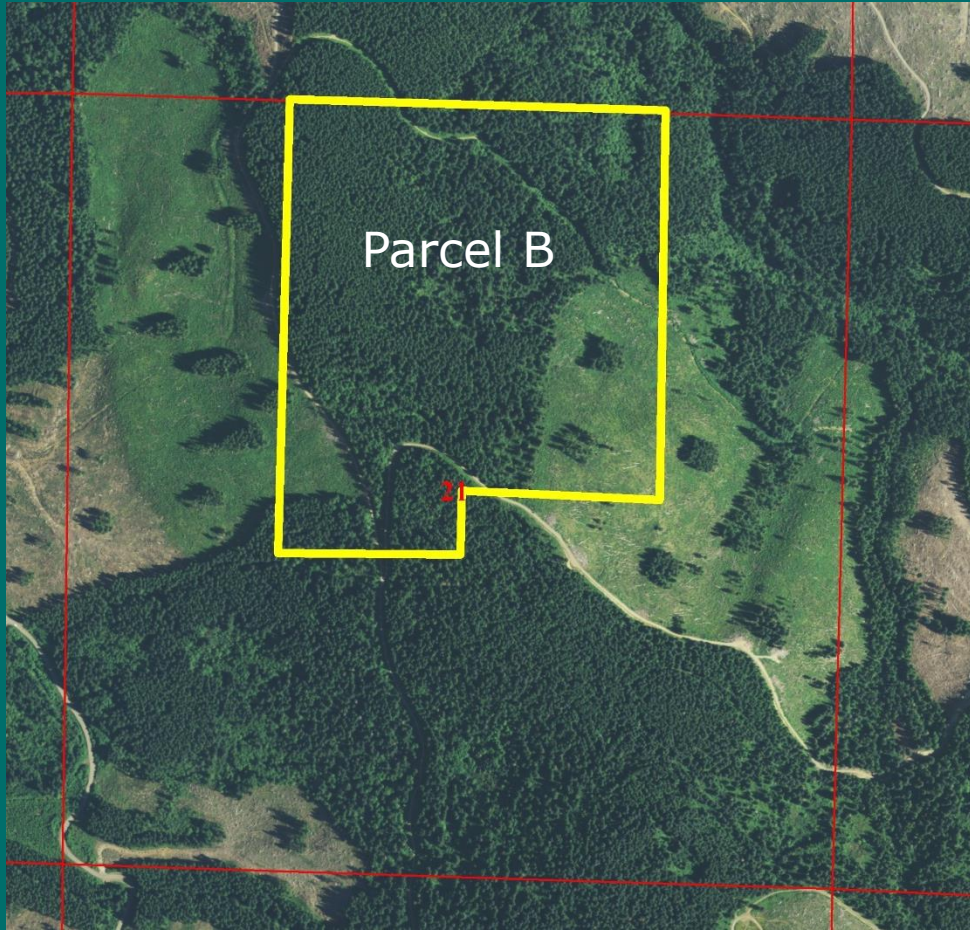
**SFL Trust to  
Common  
School Trust**

**Southeast  
portion of  
Section 6**

**163.27 acres**



# Spud Mountain Inter-Trust Exchange



**Parcel B –  
Exchange and  
retain**

**173 acres**

**Common  
School Trust to  
SFL Trust**

**Yacolt State  
Forest – S. 21**

# Spud Mountain Inter-Trust Exchange

## Appraised Value – Parcel A (SFL to Common School)

Timber (2,021 Mbf)	\$ 374 /MBF	\$ 755,000
Land (163.27 acres)	\$ 5,757 /acre	\$ 940,000
<b>Total – Parcels A&amp;B</b>	<b>\$10,382 /acre</b>	<b>\$ 1,695,000</b>

## Appraised Value – Parcel B (Common School to SFL)

Timber (4,228 Mbf)	\$ 363 /MBF	\$ 1,534,000
Land (173 acres)	\$ 1,017 /acre	\$ 176,000
<b>Total – Parcel B</b>	<b>\$ 9,884 /acre</b>	<b>\$ 1,710,000</b>

# Spud Mountain Inter-Trust Exchange

- **Public Hearing in Camas on April 8, 2015**
- **7 attendees; no opposition; 1 person spoke in favor;**
- **1 written letter in support**



# Spud Mountain



**Questions ?**

**Spud Mountain  
Inter-Trust  
Exchange  
Resolution #1453**

**Spud Mountain  
Trust Land Transfer  
Resolution #1454**





WASHINGTON STATE DEPARTMENT OF  
**Natural Resources**

---

**Peter Goldmark** - Commissioner of Public Lands