

# Department of Natural Resources



## Natural Climate Solutions Funding Update

Chair Report – Board of Natural Resources

January 3, 2024

Duane Emmons

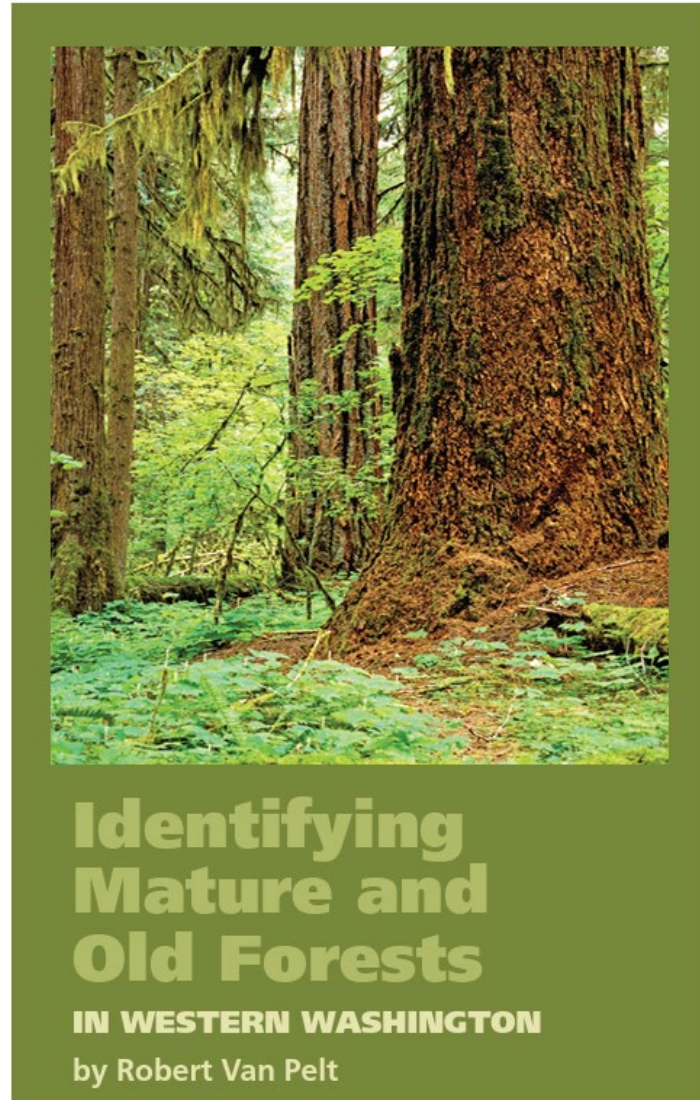


# Identification of 2000 Acres

## Status

- Identification of 2000 acres
  - Utilizing Van Pelt's guide definitions of Maturation 1 and Maturation 2 to help identify "carbon dense, structurally complex" forests.
  - Seeking to conserve areas adjacent to existing habitat, in areas to improve connectivity, and to avoid isolated small fragments scattered across ownership.
- County Concurrence

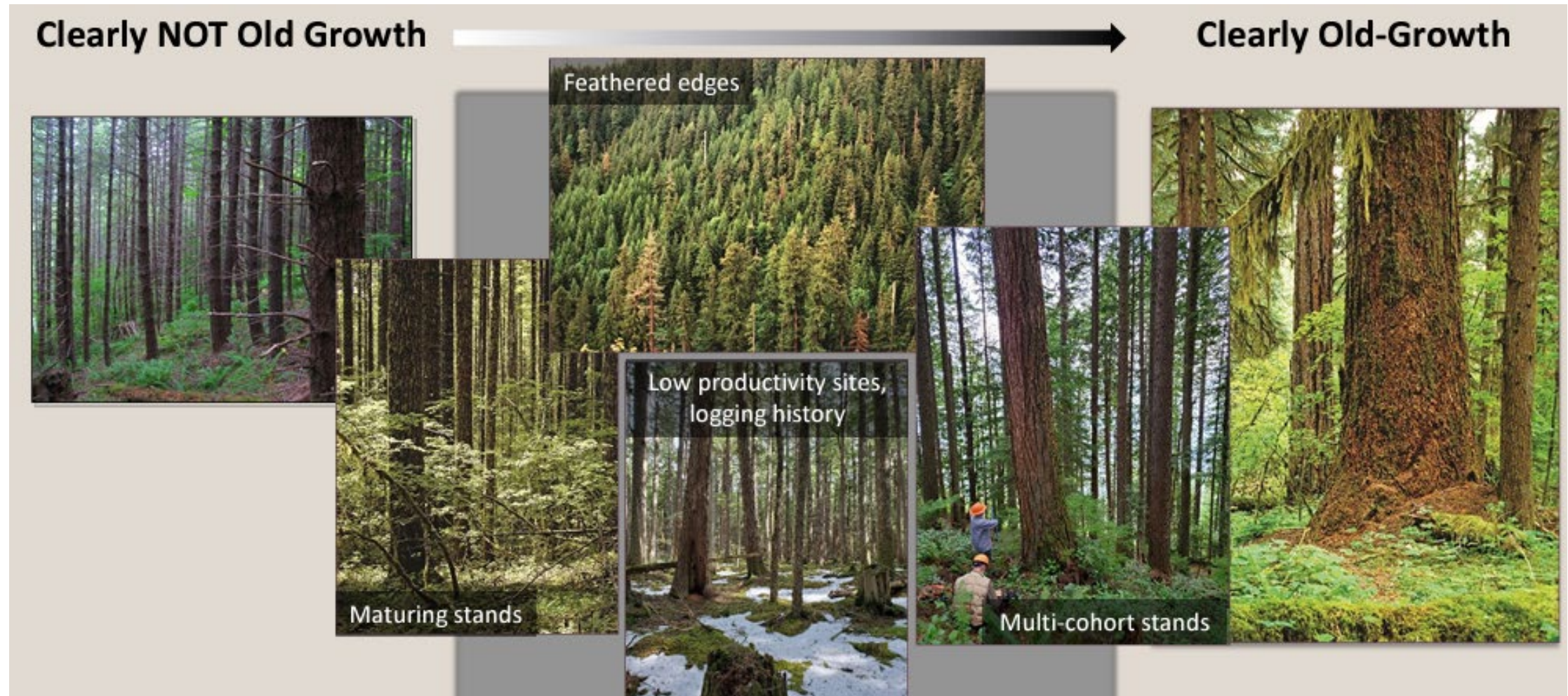
Discussing the process of identification, land transaction process, and nature of federal and state forest transfer trusts with counties





# Funding for Land Acquisitions

Selections based on science to ensure durable carbon storage over time





# Identification of 2000 Acres

## Methodology

A stand must have at least 60 metric tons per acre of live carbon and meet one or more of the following criteria:

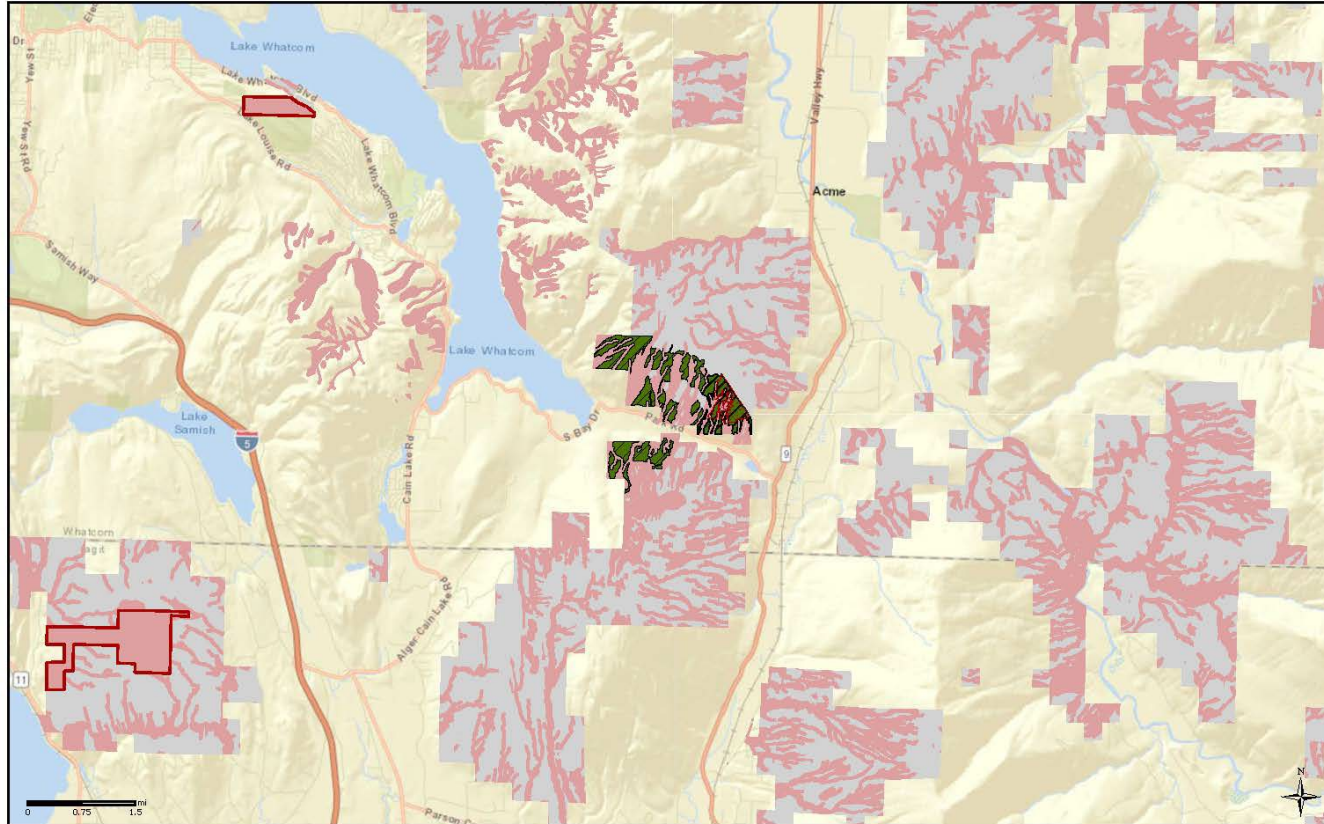
- At least 1.8 modeled canopy layers
- A Quadratic Mean Diameter\* of at least 17 inches for the largest 100 trees
- At least 12 trees per acre that are in the 30 inch diameter class or larger

\*The quadratic mean gives greater weight to larger trees and is equal to or greater than the arithmetic mean.

In stands with small diameters and a narrow range of diameters, the differences are slight. In stands with large diameters and a wide range of diameters present or with strongly skewed diameter distributions, the differences between arithmetic mean and quadratic mean diameters can be substantial.



# Whatcom County



Potential 2000 Acres Sites  
Anderson Creek

- Proposed Sites
- Approved Natural Area Boundaries
- Potential 2000 Acres Sites
- Planned VRH/LUC (through FY26)
- VRH-deferred
- DNR-Managed Lands

All data are draft and subject to change.

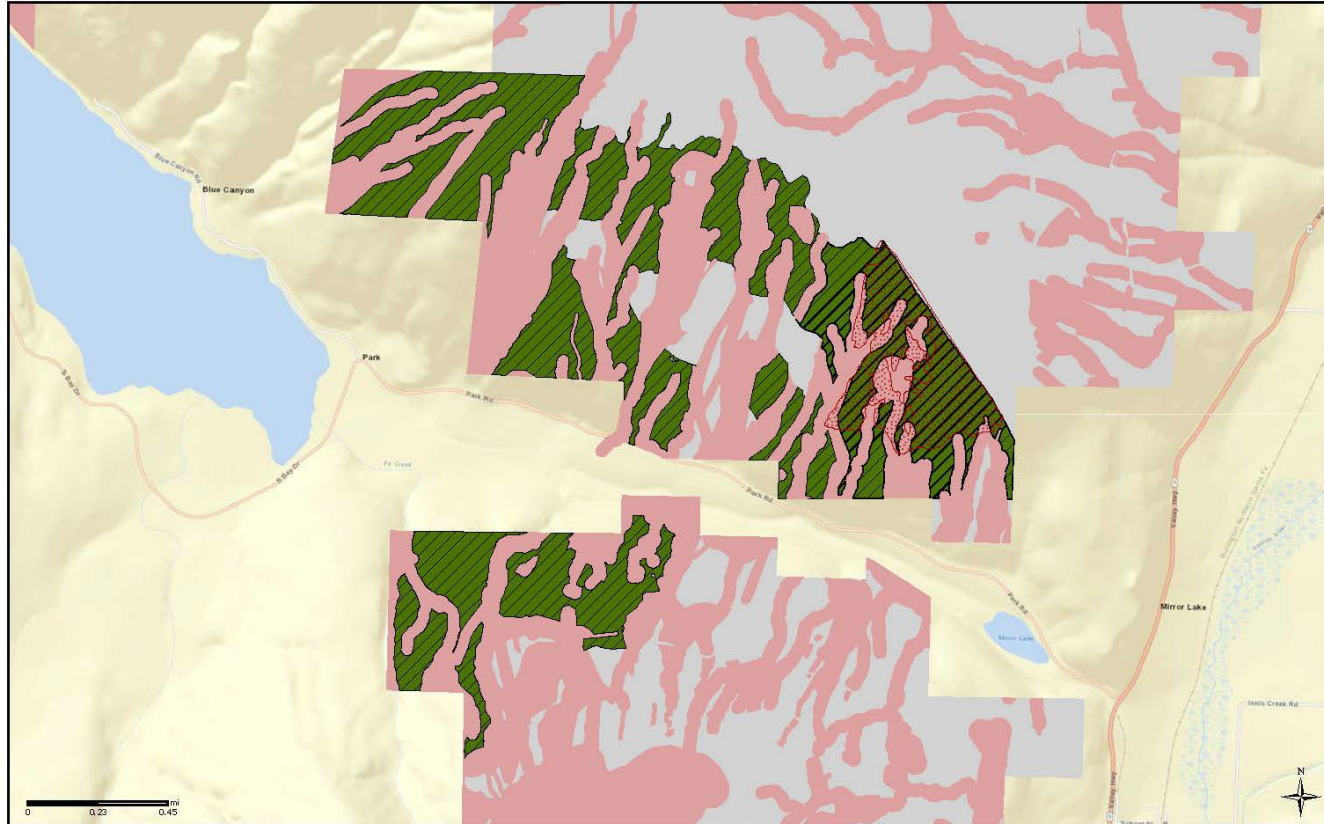


## Anderson Creek

Trusts	Acres
State Forest Transfer	190
Scientific School	83
State Forest Purchase	64
Common School and Indemnity	233
Agricultural School	4
Capitol Grant	1
<b>Grand Total</b>	<b>575</b>



# Whatcom County



Potential 2000 Acres Sites  
Anderson Creek

- |                                |                   |
|--------------------------------|-------------------|
| Proposed Sites                 | VRH-deferred      |
| Planned VRH/LUC (through FY26) | DNR-Managed Lands |

All data are draft and subject to change.

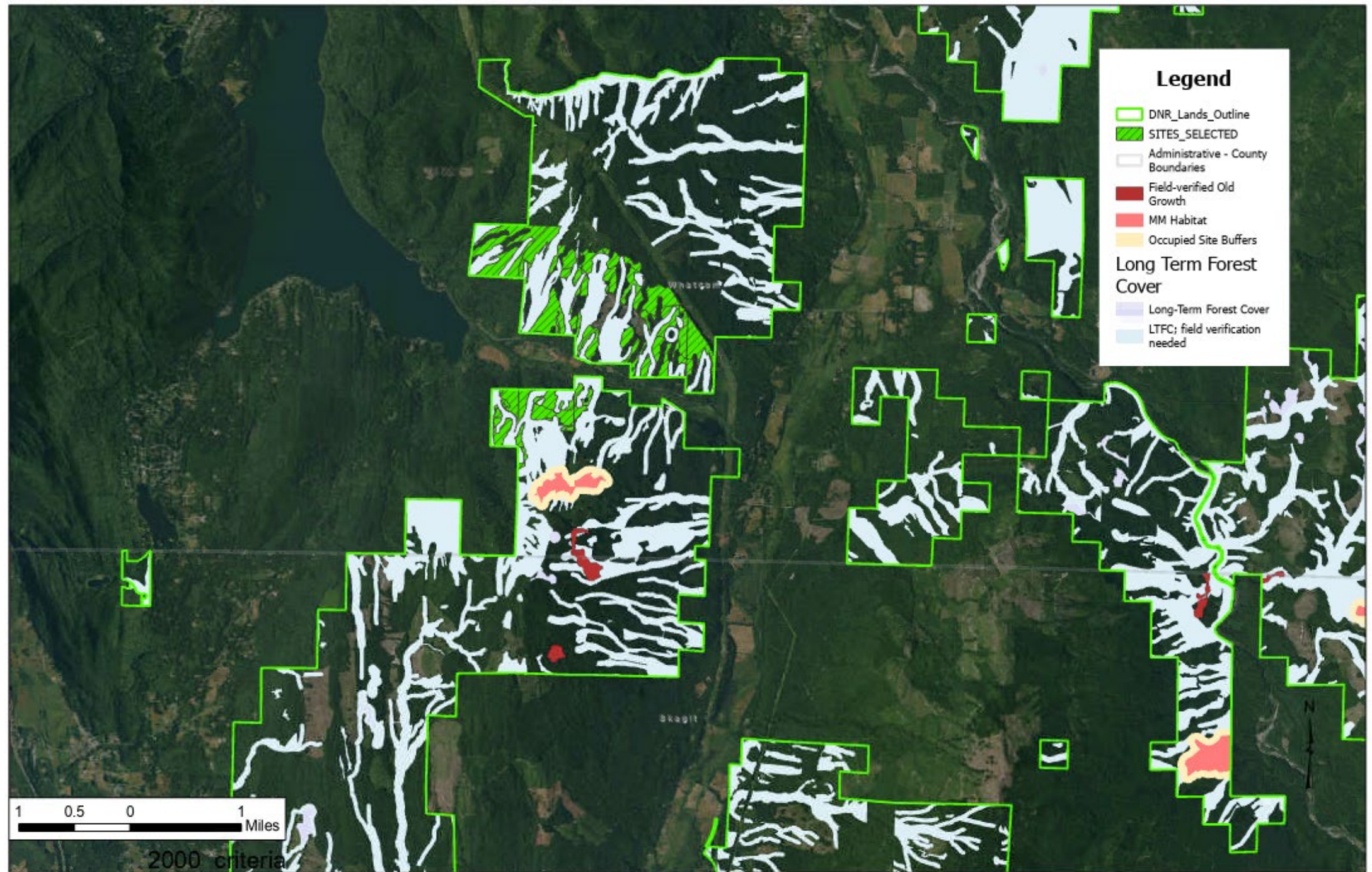


## Co-benefits

Large contiguous block of structurally complex forest within Lake Whatcom Watershed and adjacent to habitat

Allows for creation of a larger contiguous Natural Resource Conservation Area (NRCA)



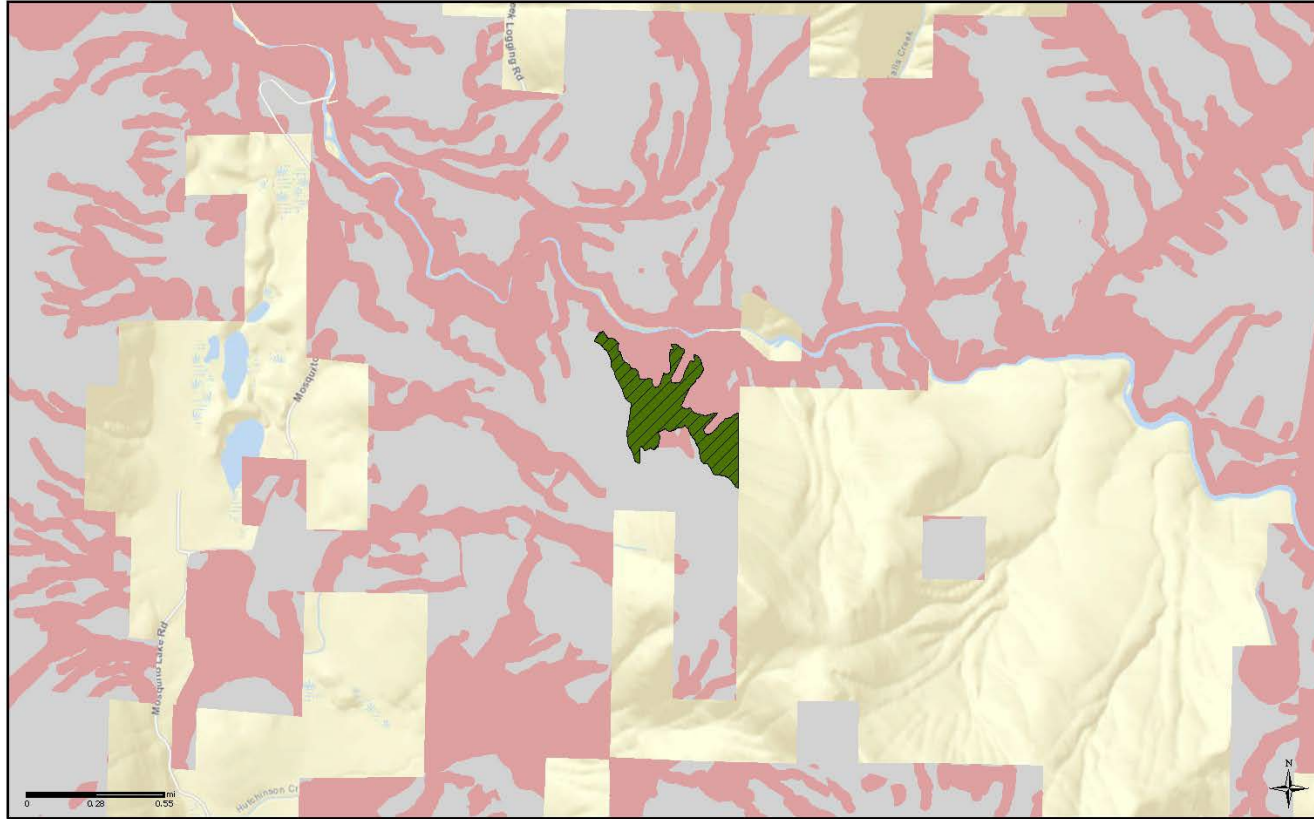


1 0.5 0 1 Miles

2000 criteria



# Whatcom County



Potential 2000 Acres Sites  
Brokedown Palace

- Proposed Sites
- Planned VRH/LUC (through FY26)
- VRH-deferred
- DNR-Managed Lands

All data are draft and subject to change.

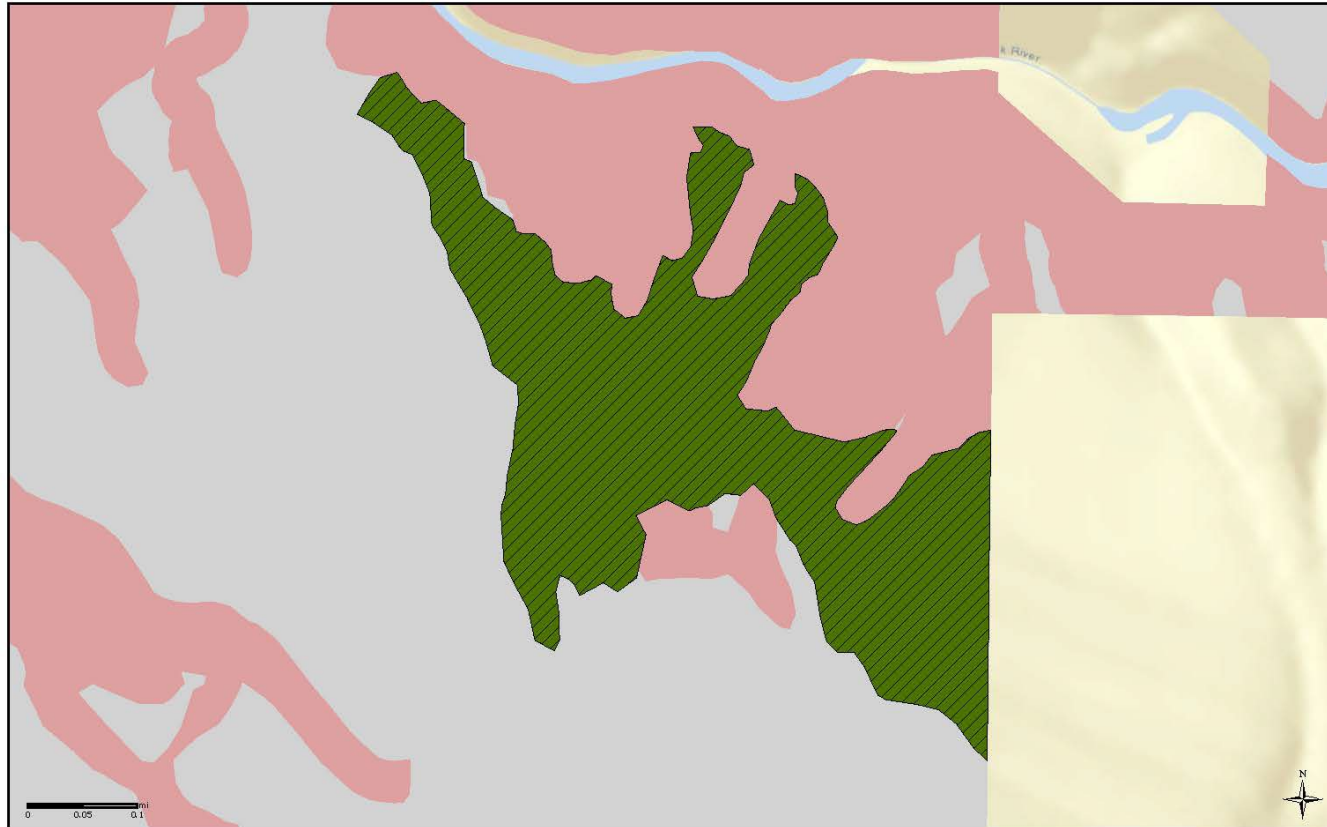


## Brokedown Palace

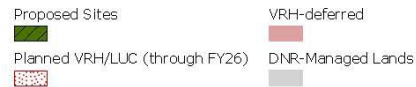
Trusts	Acres
State Forest Transfer	42
Common School	33
<b>Grand Total</b>	<b>75</b>



# Whatcom County



Potential 2000 Acres Sites  
Brokedown Palace



All data are draft and subject to change.



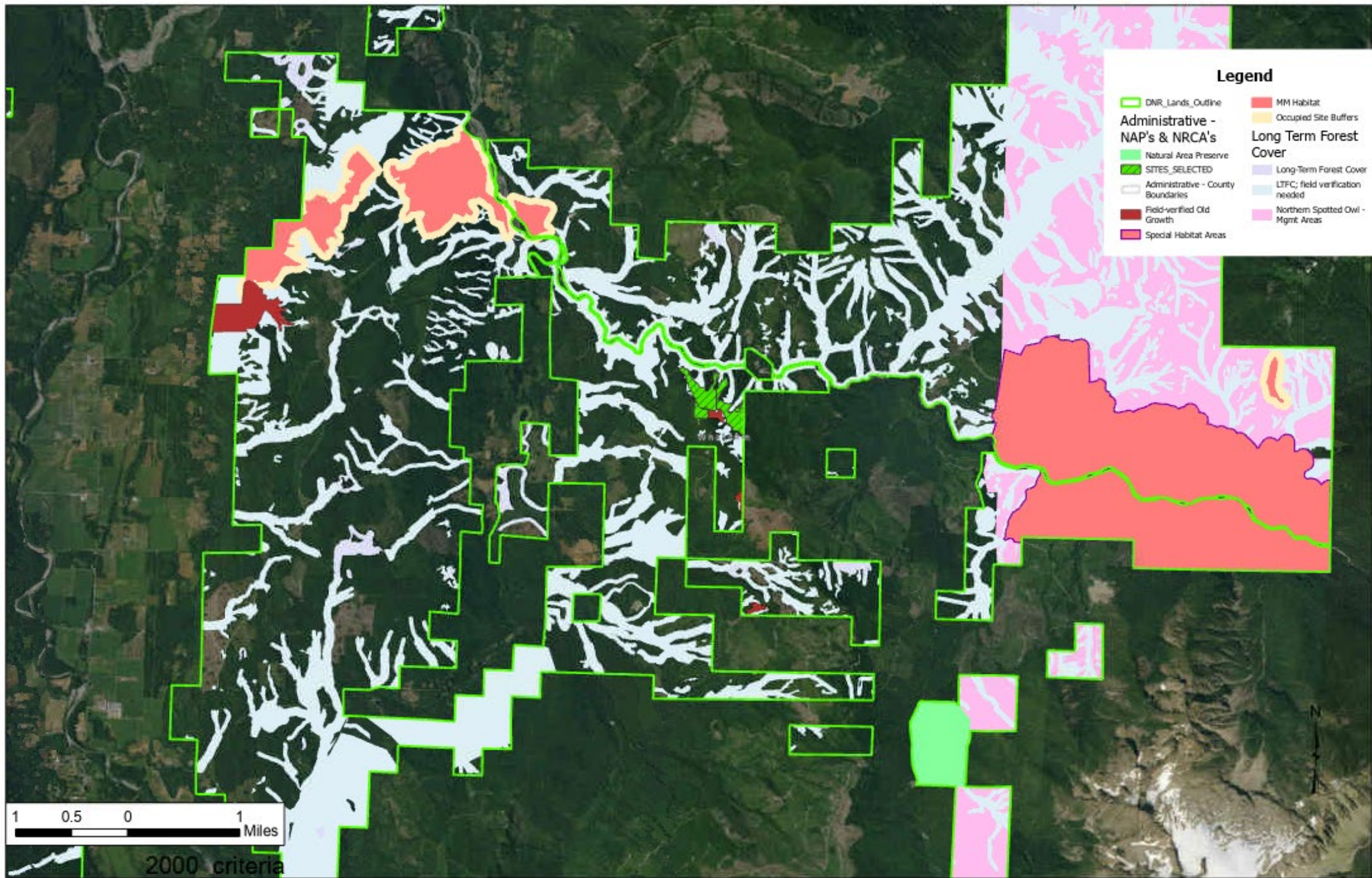
## Co-benefits

Provides connectivity between larger blocks of conservation

Adjacent to field verified old growth

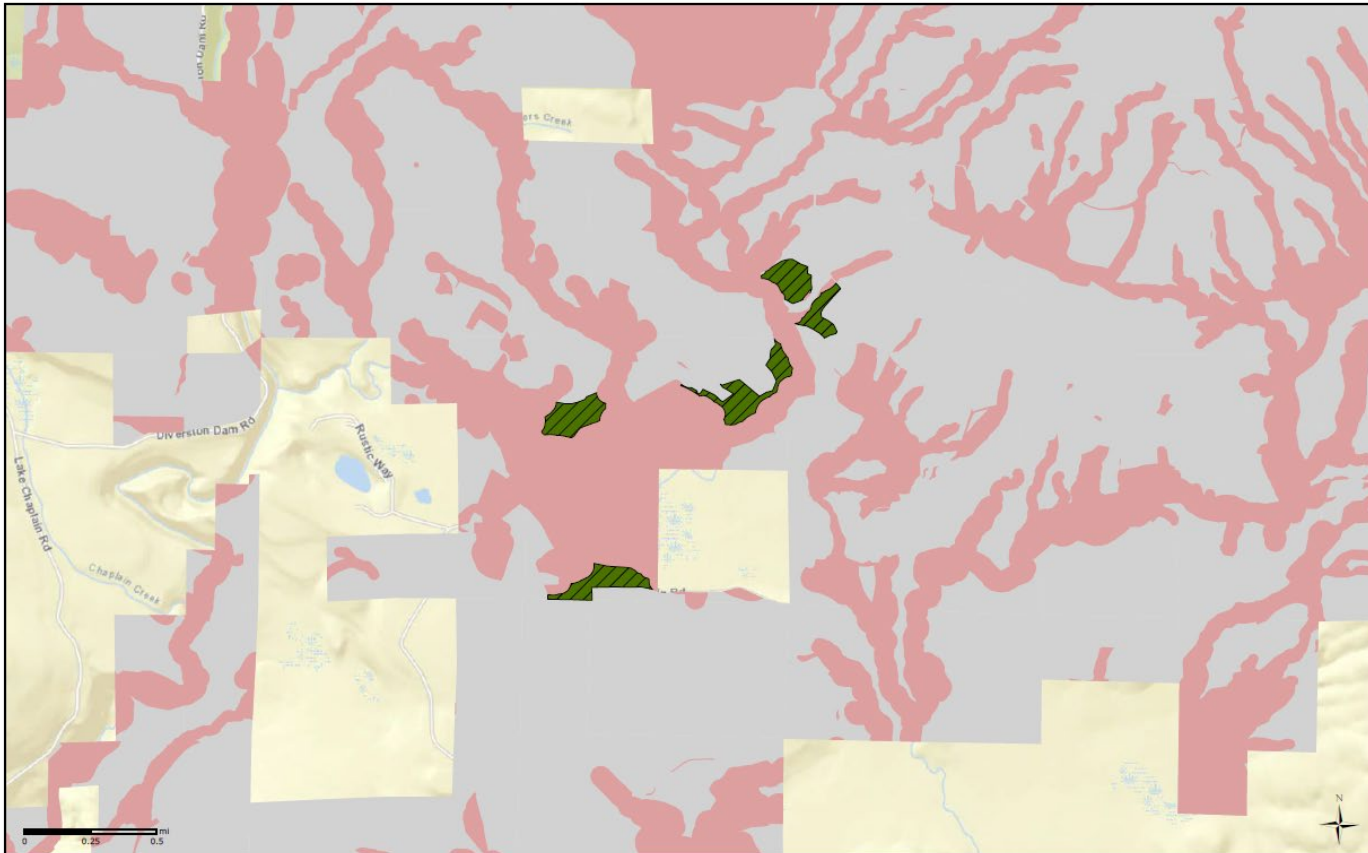
Increases buffer on Nooksack River







# Snohomish County



Potential 2000 Acres Sites  
Marsh Creek

Proposed Sites  
VRH-deferred

Planned VRH/LUC (through FY26)

DNR-Managed Lands

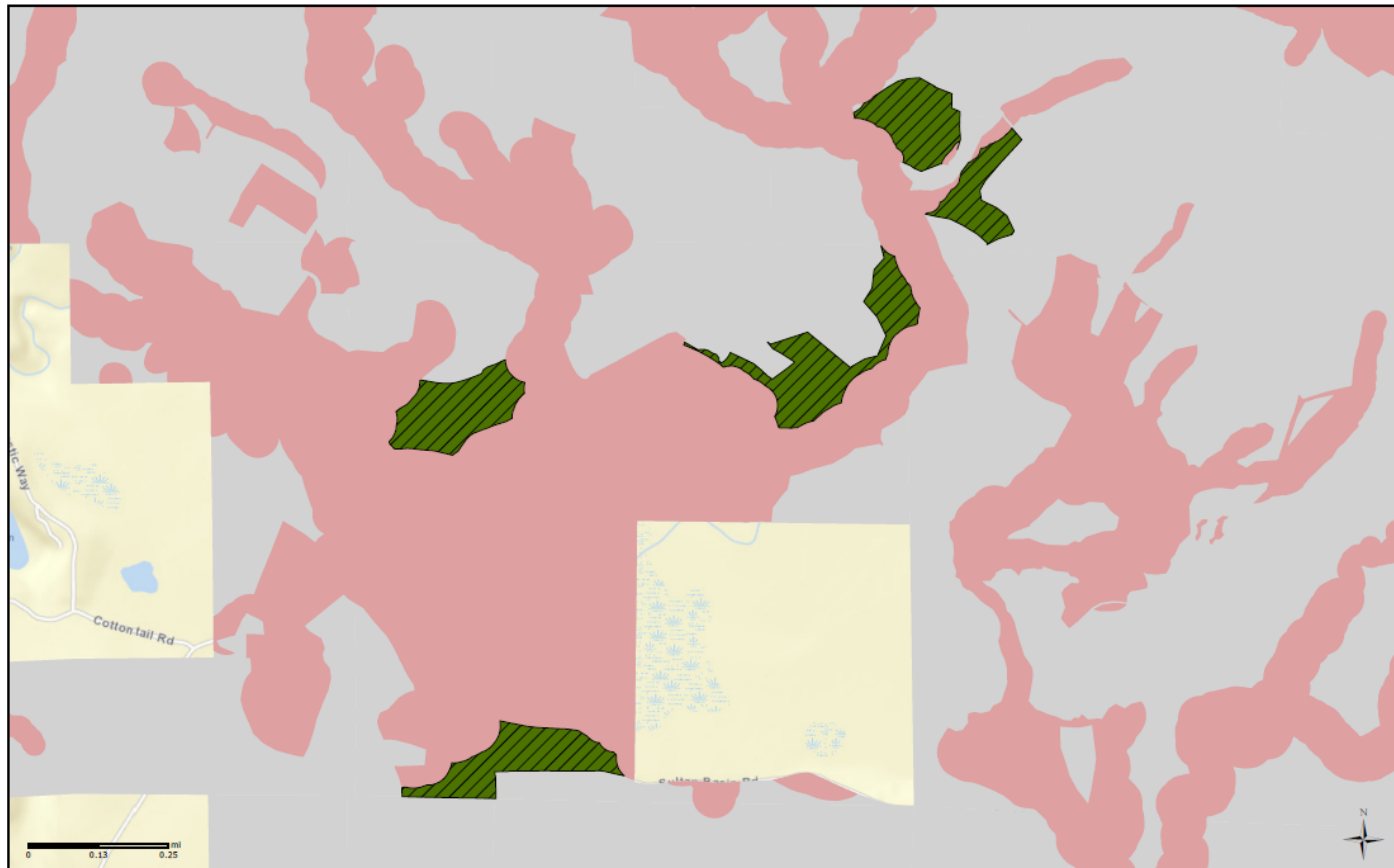
All data are draft and subject to change.



## Marsh Creek

Trusts	Acres
State Forest Transfer	46
Common School and Indemnity	18
Agricultural School	5
<b>Grand Total</b>	<b>68</b>

# Snohomish County



- Proposed Sites
- VRH-deferred
- Planned VRH/LUC (through FY26)
- DNR-Managed Lands

All data are draft and subject to change.



## Co-benefits

Buffers rare and sensitive wetland complex.

Washington Natural Heritage Council identified area as high priority for conservation

Avoids short-term impact to beneficiaries at the request of the county council

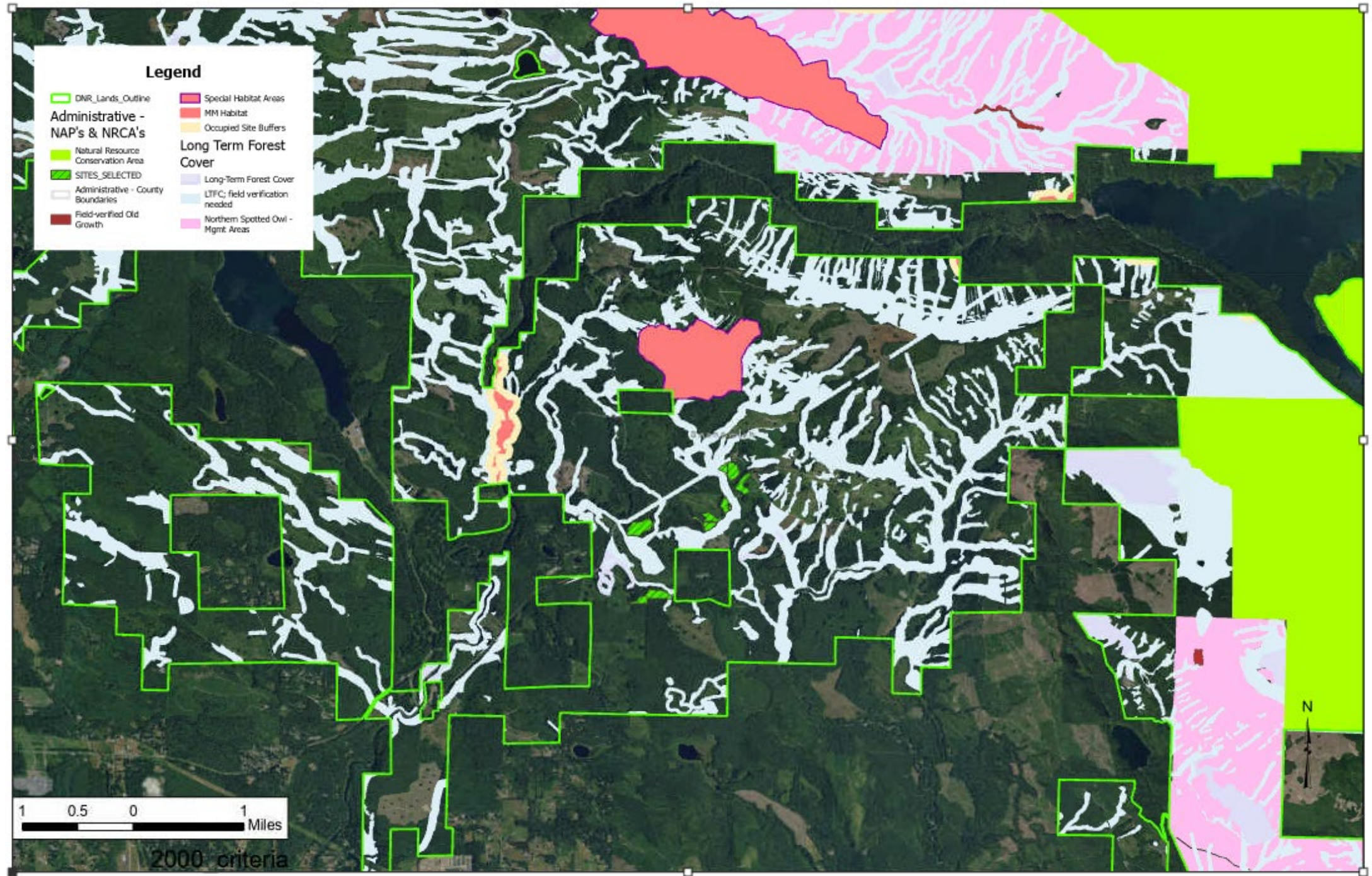


### Legend

- DNR\_Lands\_Outline
- Administrative - NAP's & NRCA's
  - Natural Resource Conservation Area
  - SITES\_SELECTED
- Administrative - County Boundaries
- Field-verified Old Growth
- Special Habitat Areas
  - MM Habitat
  - Occupied Site Buffers
- Long Term Forest Cover
  - Long-Term Forest Cover
  - LTFC; field verification needed
  - Northern Spotted Owl - Mgmt. Areas



2000 criteria





# Marsh Creek



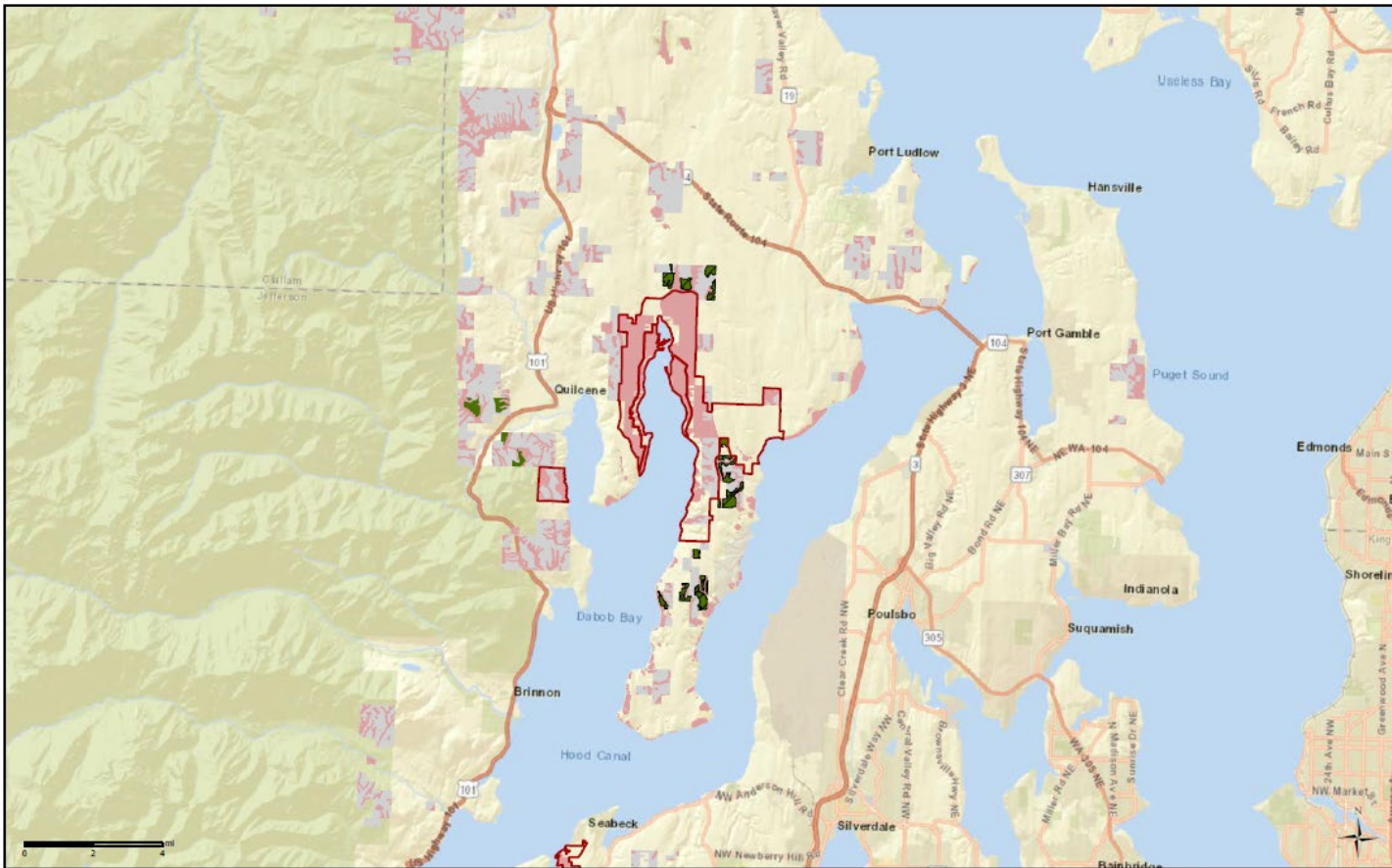
## Condition


Although the immediate buffer and overall landscape has had, and continues to have, significant timber harvest activity, the wetland complex is in good ecological condition. Species composition and structure are at or near conditions expected with no human-induced disturbances.





Most low elevation wetlands in western Washington, especially marshes and shrubs swamps, are at least partially dominated by aggressive nonnative species such as *Phalaris arundinacea* and *Iris pseudacorus* and aggressive native species such as *Typha latifolia* and *Spiraea douglasii* (Rocchio and Crawford 2014).



# Jefferson County




**WASHINGTON STATE DEPARTMENT OF NATURAL RESOURCES**  
 Potential 2000 Acres Sites  
 Dabob

-  Proposed Sites
-  VRH-deferred
-  Approved Natural Area Boundaries
-  DNR-Managed Lands

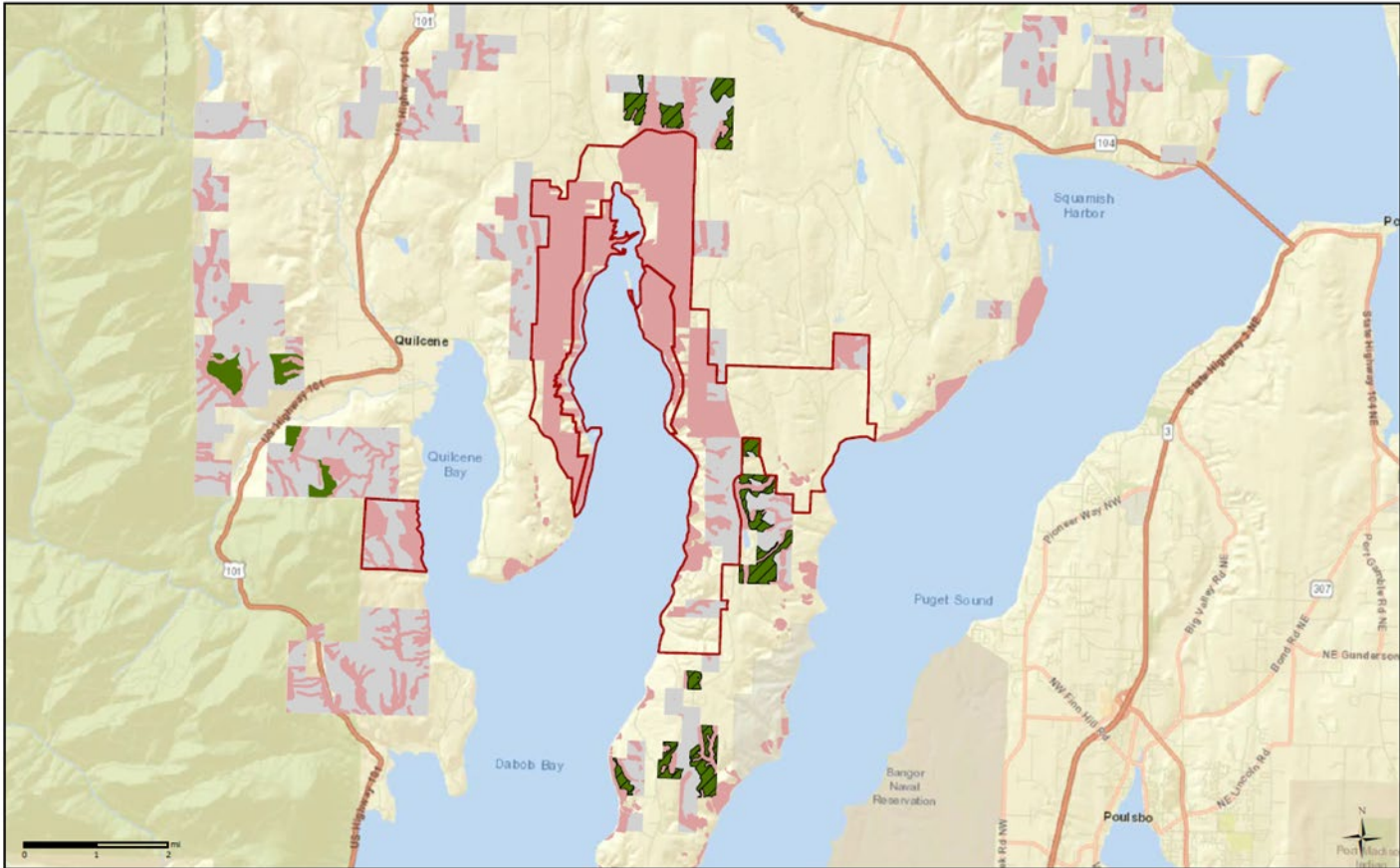
All data are draft and subject to change.




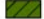
## Dabob



Trusts	Acres
State Forest Transfer	606
Common School and Indemnity	65
<b>Grand Total</b>	<b>671</b>


# Jefferson County



 WASHINGTON STATE DEPARTMENT OF  
**NATURAL RESOURCES**  
Potential 2000 Acres Sites  
Dabob

Proposed Sites  


Approved Natural Area Boundaries  
  
Planned VRH/LUC (through FY26)  


VRH-deferred  
  
DNR-Managed Lands  


All data are draft and subject to change.



## Co-benefits

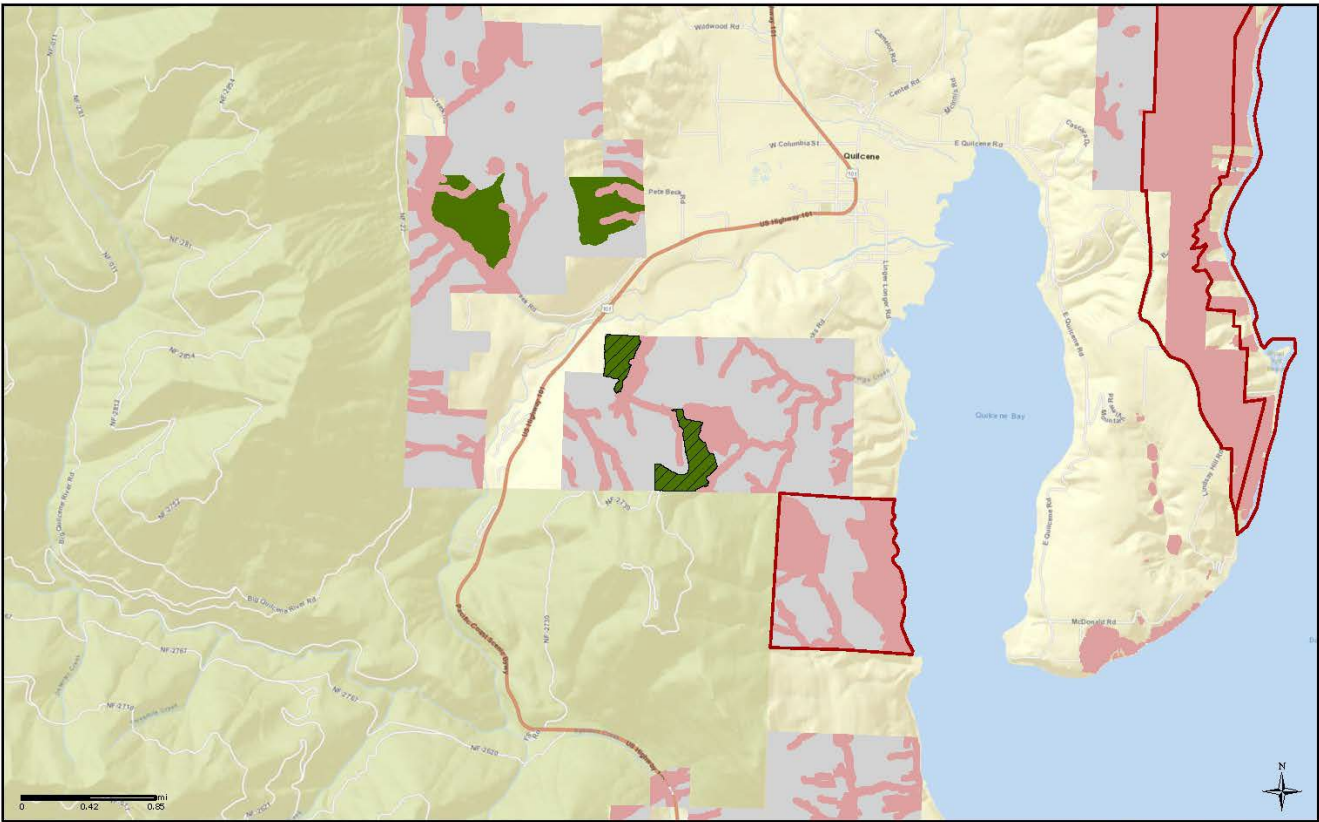
Adjacent to existing Natural Area

Presence of rare plant community in the vicinity


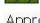
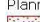
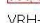
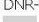
In close proximity to federal ownership



# Jefferson County




**WASHINGTON STATE DEPARTMENT OF NATURAL RESOURCES**  
 Potential 2000 Acres Sites  
 Mt Walker

-  Proposed Sites
-  Approved Natural Area Boundaries
-  Planned VRH/LUC (through FY26)
-  VRH-deferred
-  DNR-Managed Lands

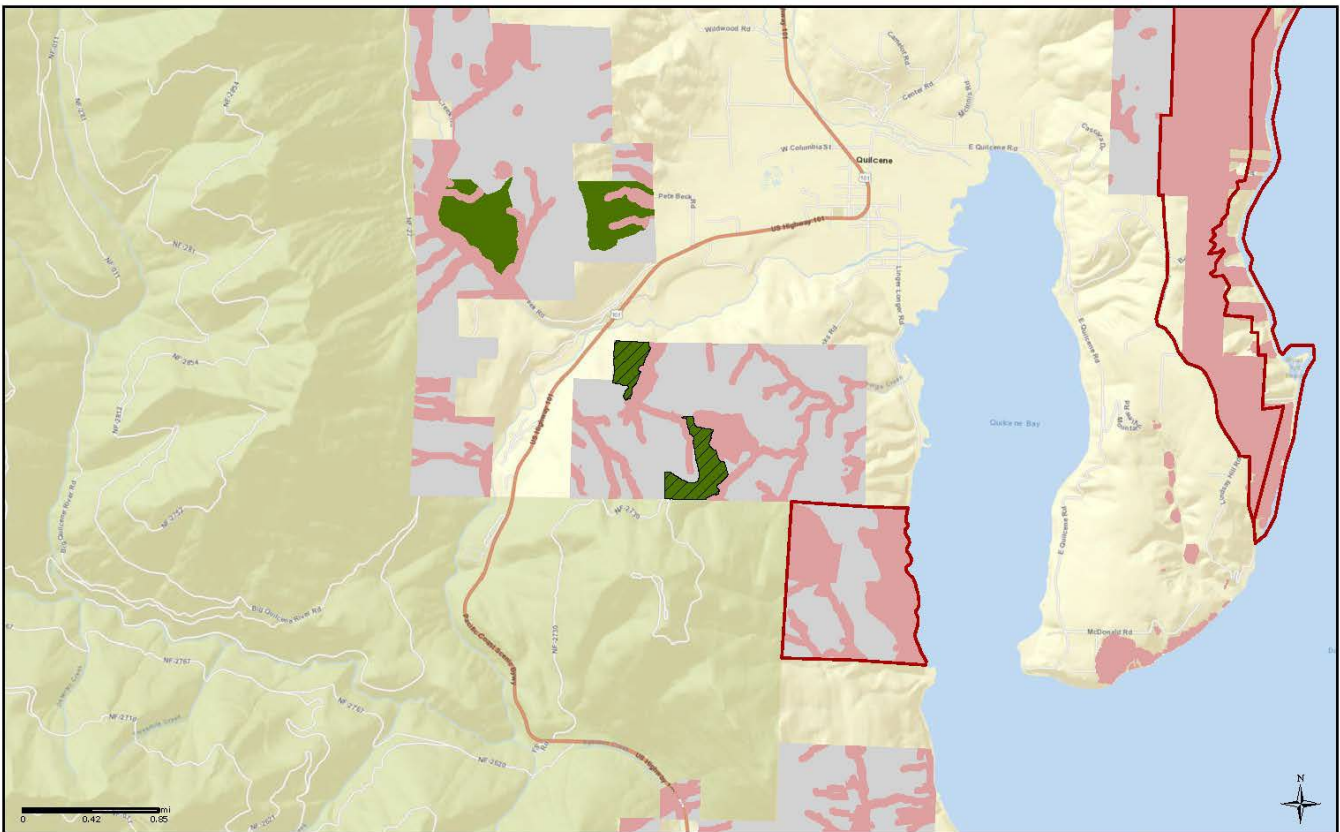
All data are draft and subject to change.



## Mt Walker & Notch Pass

Trusts	Acres
State Forest Transfer	281
<b>Grand Total</b>	<b>281</b>

# Jefferson County



## Co-benefits

- In close proximity to existing Natural Area
- Adjacent to habitat
- Increases riparian buffers
- Adjacent to federal ownership



Potential 2000 Acres Sites  
Mt Walker

Proposed Sites	Planned VRH/LUC (through FY26)	DNR-Managed Lands
Approved Natural Area Boundaries	VRH-deferred	

All data are draft and subject to change.



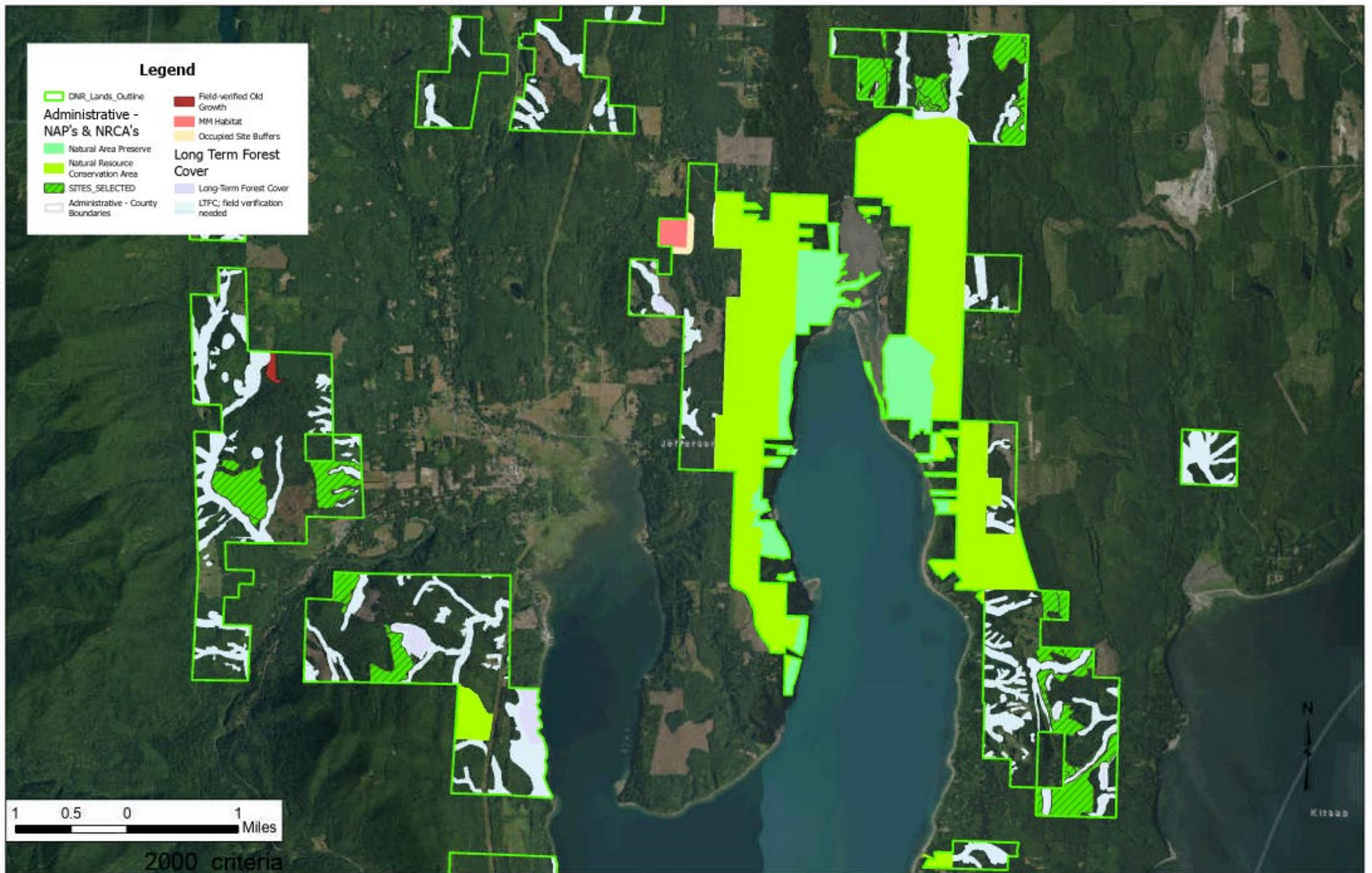


### Legend

- DNR\_Lands\_Outline
- Administrative - NAP's & NRCA's
  - Natural Area Preserve
  - Natural Resource Conservation Area
  - SITES\_SELECTED
  - Administrative - County Boundaries
- Field-verified Old Growth
- MM Habitat
- Occupied Site Buffers
- Long Term Forest Cover
  - Long-Term Forest Cover
  - LTFC; field verification needed

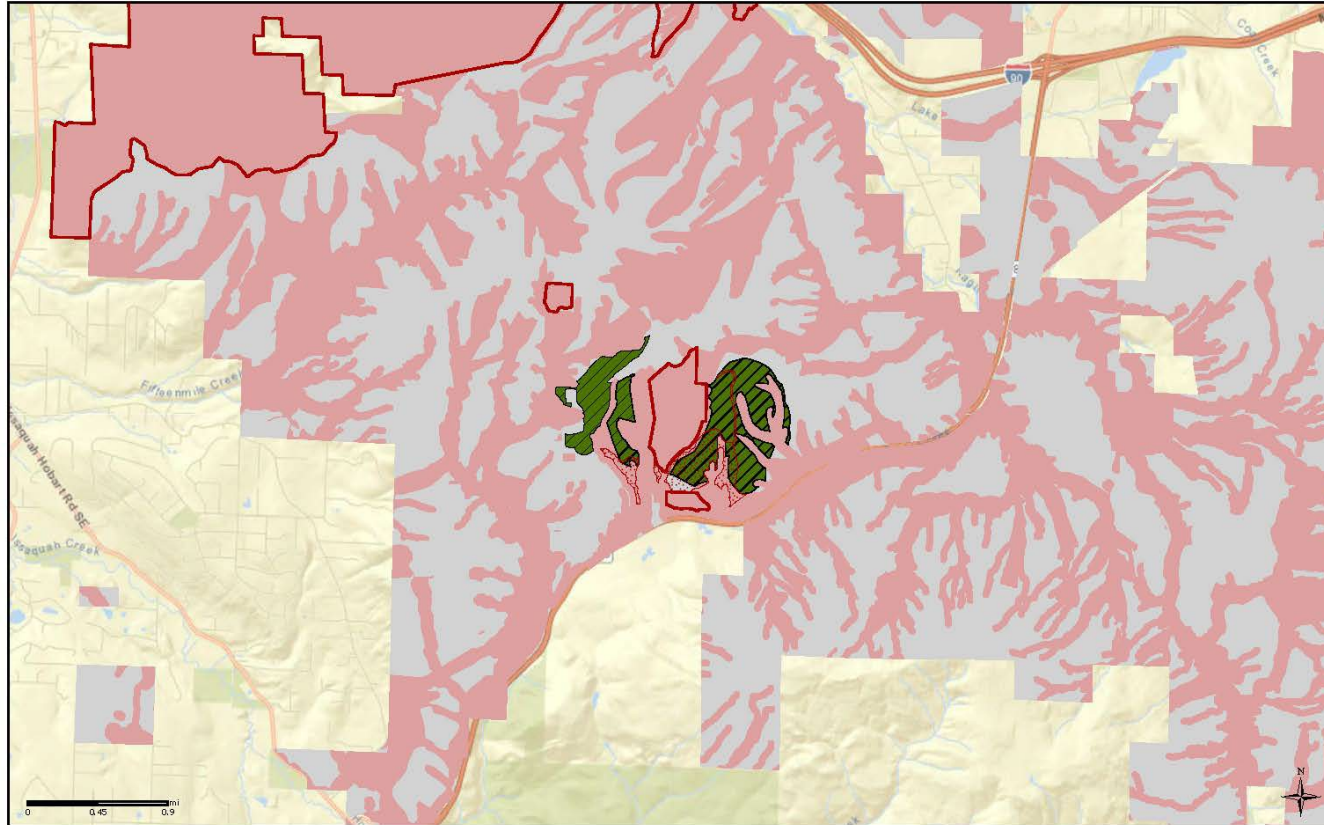


2000 criteria





# King County



Potential 2000 Acres Sites  
West Tiger Mtn

- Proposed Sites
- Approved Natural Area Boundaries
- Planned VRH/LUC (through FY26)
- VRH-deferred
- DNR-Managed Lands

All data are draft and subject to change.



## West Tiger Mountain

Trusts	Acres
State Forest Transfer	136
Scientific School	31
Capitol Grant	125
<b>Grand Total</b>	<b>292</b>



# King County



## Co-benefits

Adjacent to existing Natural Resource Conservation Area

Within the Mountains to Sound Greenway National Heritage Area and adjacent to Hwy 18



Potential 2000 Acres Sites  
West Tiger Mtn



All data are draft and subject to change.





### Legend

DNR\_Lands\_Outline

Administrative -  
NAP's & NRCA's

Natural Resource  
Conservation Area

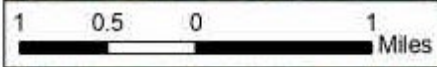
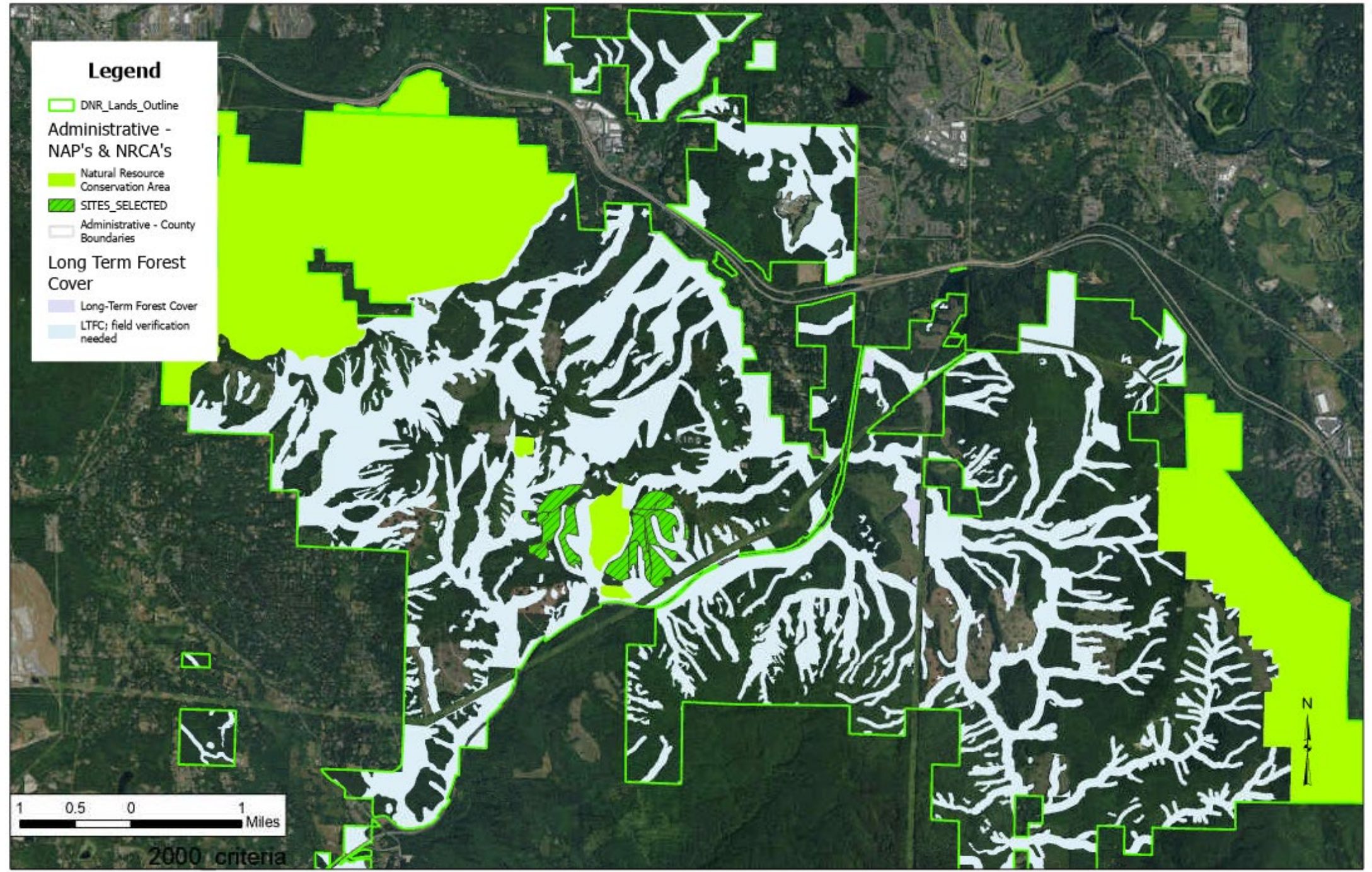
SITES\_SELECTED

Administrative - County  
Boundaries

Long Term Forest  
Cover

Long-Term Forest Cover

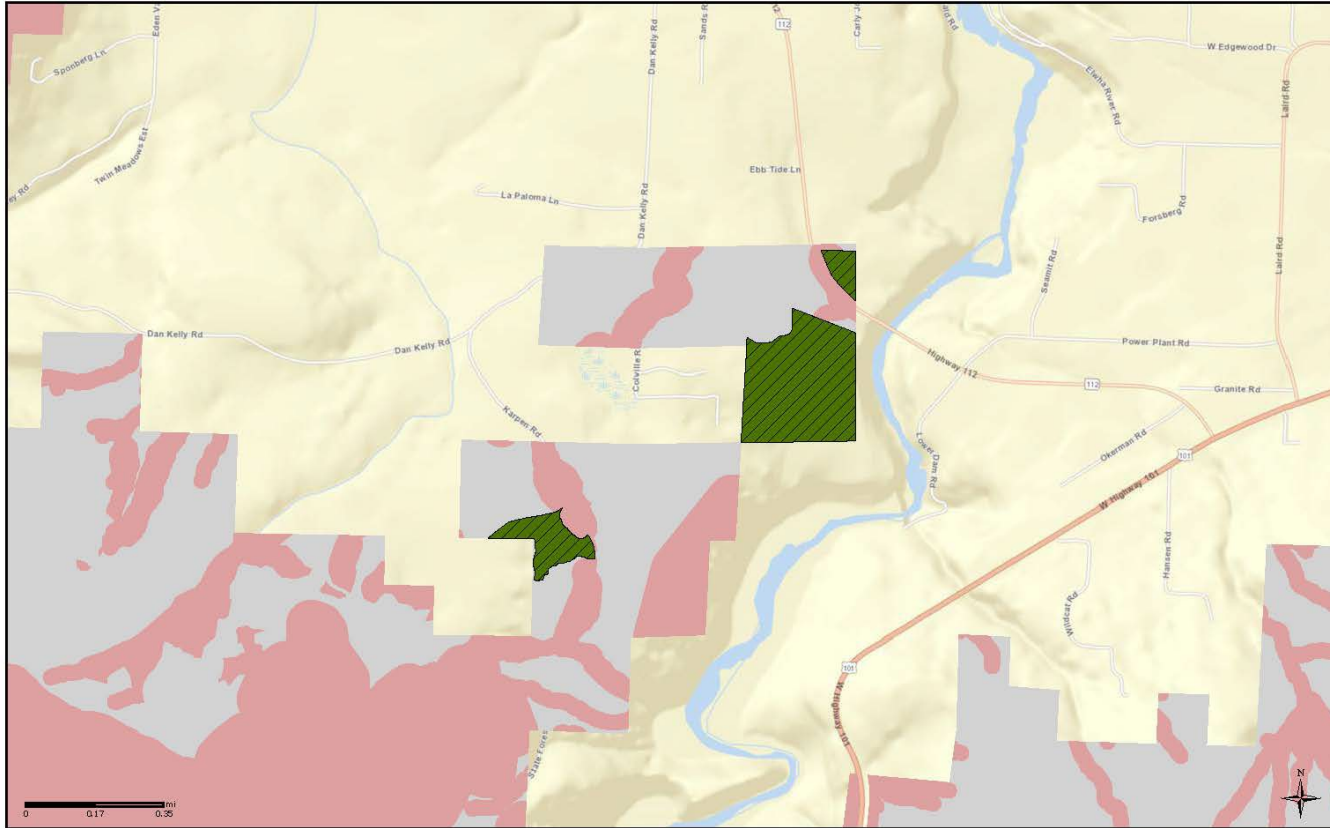
LTFC; field verification  
needed



2000 criteria



# Clallam County



Potential 2000 Acres Sites  
Power Plant

- Proposed Sites
- Planned VRH/LUC (through FY26)
- VRH-deferred
- DNR-Managed Lands

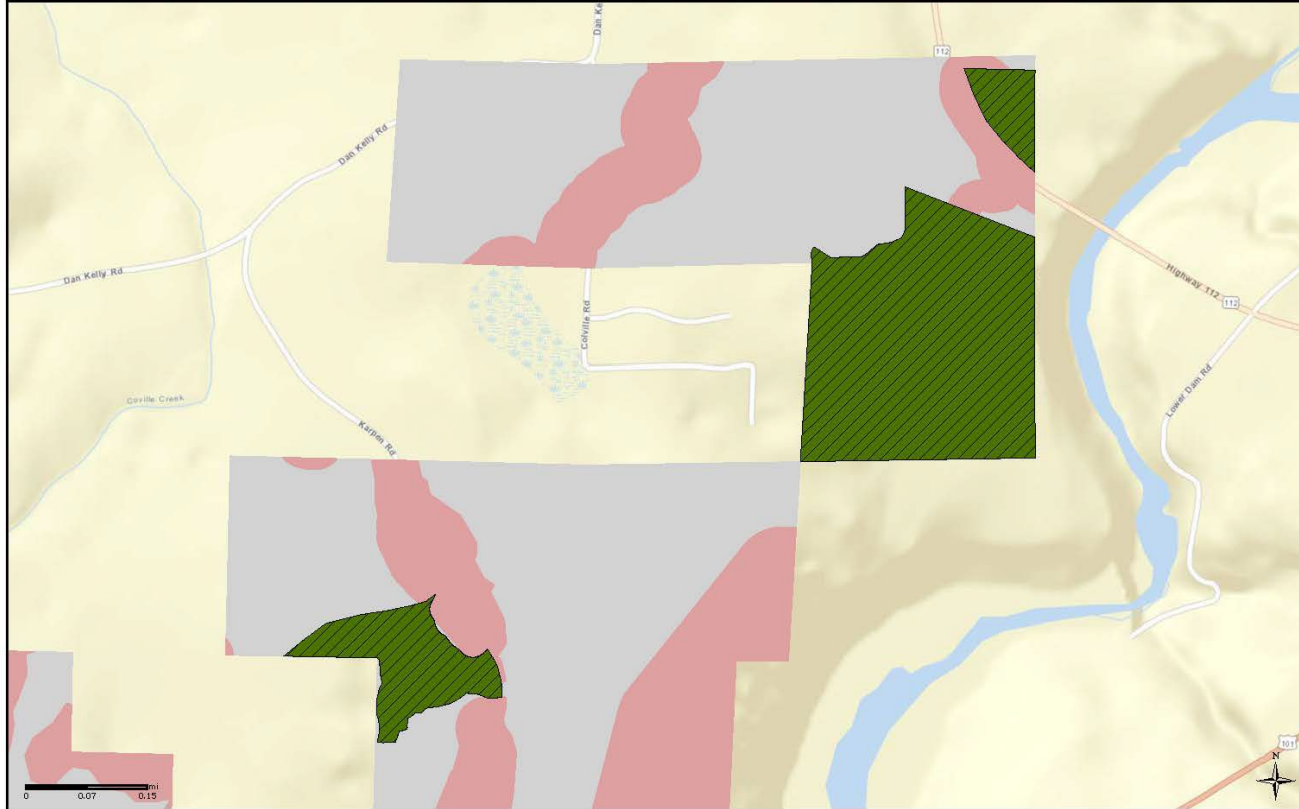
All data are draft and subject to change.



## Power Plant

Trusts	Acres
State Forest Transfer	69
<b>Grand Total</b>	<b>69</b>

# Clallam County



Potential 2000 Acres Sites  
Power Plant

- Proposed Sites
- Planned VRH/LUC (through FY26)
- VRH-deferred
- DNR-Managed Lands

All data are draft and subject to change.



## Co-benefits

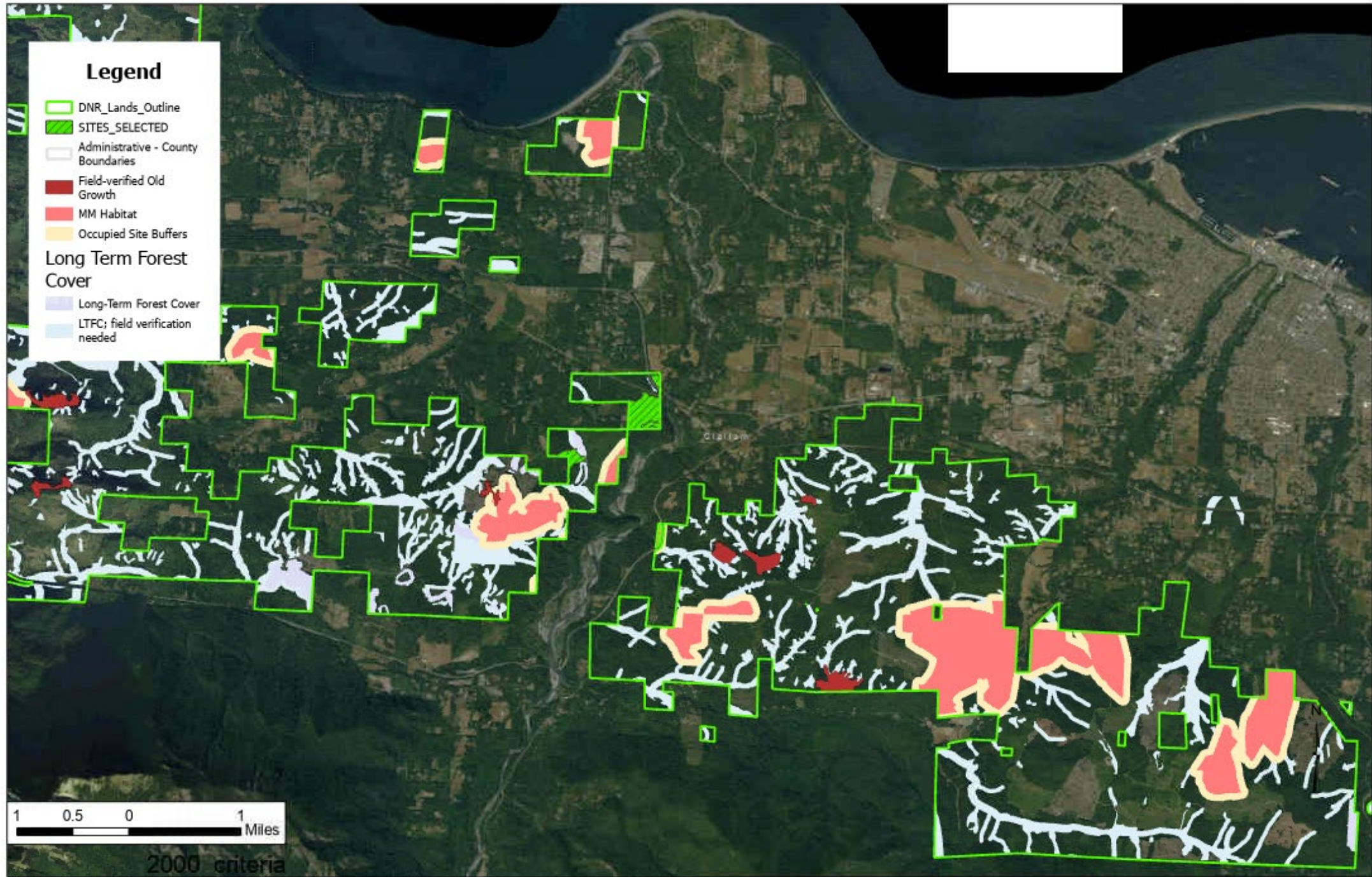
In proximity to existing habitat and to federal ownership along the river corridor.

Adjacent to existing recreation areas



### Legend

- DNR\_Lands\_Outline
- SITES\_SELECTED
- Administrative - County Boundaries
- Field-verified Old Growth
- MM Habitat
- Occupied Site Buffers
- Long Term Forest Cover
- Long-Term Forest Cover
- LTFC; field verification needed



1 0.5 0 1 Miles

2000 criteria



# Next Steps

## County Concurrence

Letters have been sent to each county with a request for concurrence by January 31<sup>st</sup>

## Land Transfers

Land transfers will occur as lands are acquired for each trust.

Transfers must be appraised for full fair market value.

Acquisitions and transfers will each be presented to the board for approval





