



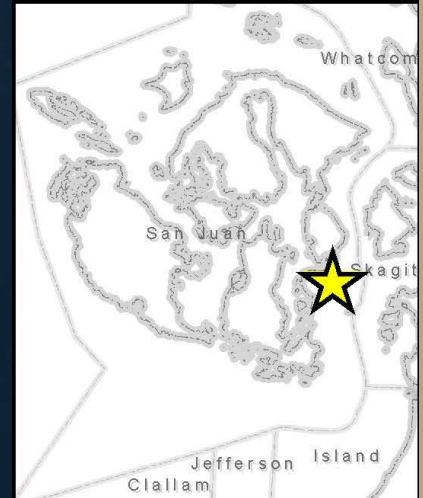
Reeds Bay - San Juan County



Bay; located on SW end of Decatur Island at 48° 29' 38.31" N, 122° 49' 7.35" W.

Named for the Reed family who settled on the bay in the 1860's. Tacee and her husband John P. Reed were the first settlers on Decatur Island.

The name currently appears misspelled on maps as "Reads Bay".



Wenaha Peak - Columbia County



Summit; 5,950 ft elevation; located in the Wenaha-Tucannon Wilderness Area in the Umatilla National Forest at 46° 1' 49.38" N, 117° 53' 30.16" W.

This proposed name was submitted by the Confederated Tribes of the Colville Reservation as part of an effort to replace feature names containing the word "squaw".

The feature is located in the traditional territory of the Chief Joseph Band of the Nez Perce. Name references nearby North Fork Wenaha River ("Wenaha" is a Cayuse place name).



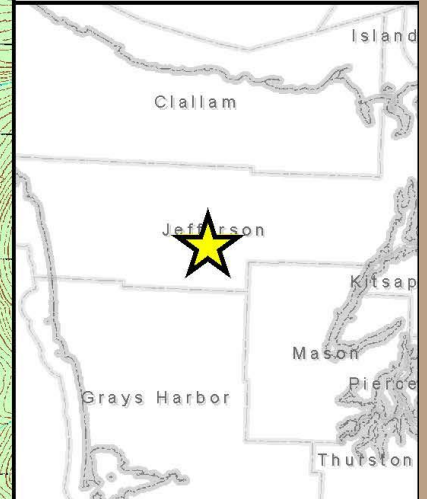
Noskeliikuu - Jefferson County



Stream; 0.75 miles in length, heads in the Olympic National Park at 47° 37' 40.00" N, 123° 39' 17.00" W, flows NE into North Fork Quinault River at 47° 38' 7.32" N, 123° 38' 42.65" W.

The name was submitted by the Quinault Indian Nation as part of an effort to replace feature names containing the word "squaw".

The proposed name means "the place where the whale dropped" after an event witnessed by Quinault ancestors in the area. The name for the feature has been used in oral histories for at least four generations.



Sq' wanana - Klickitat County



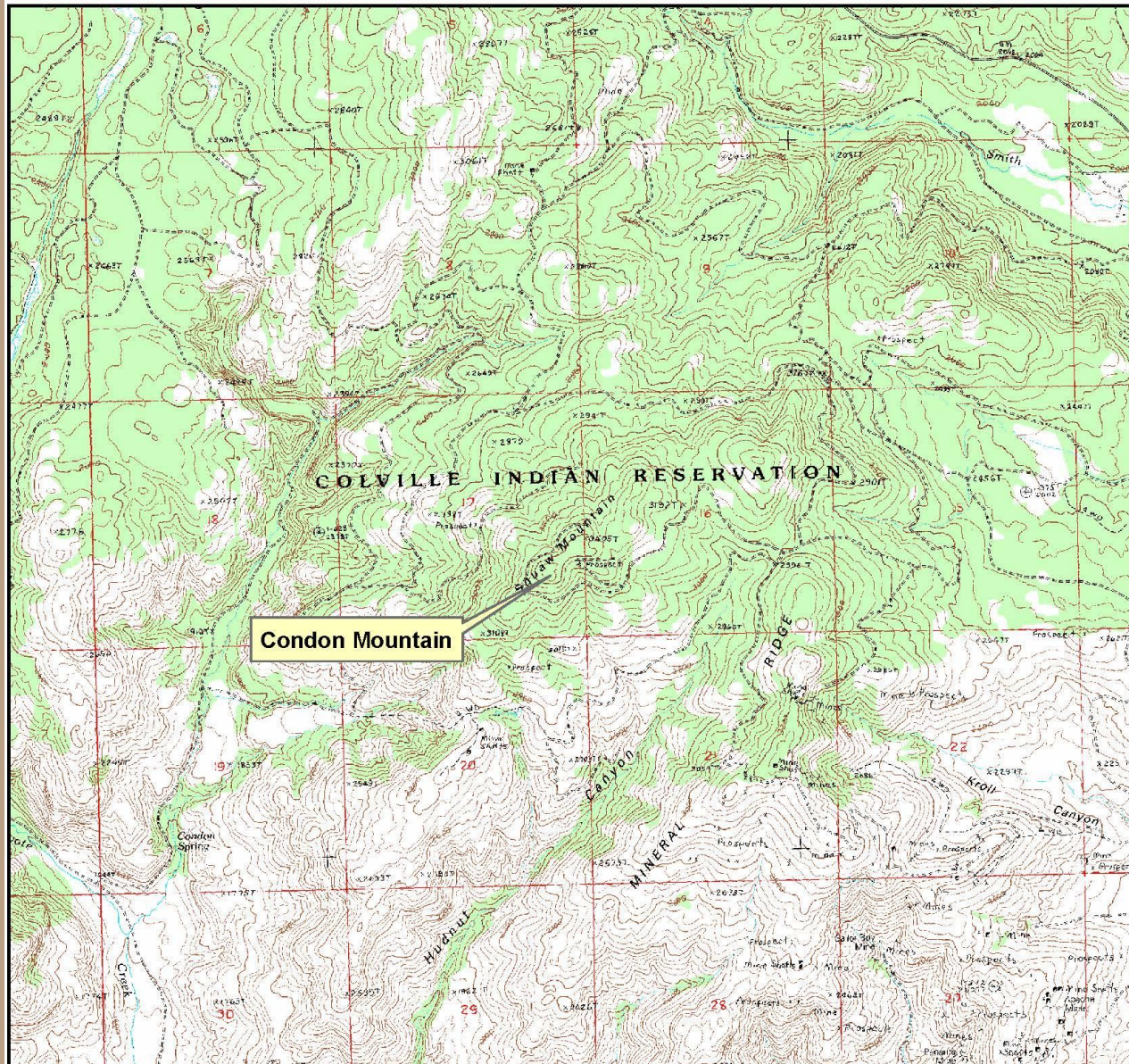
Island; 1.5 acres located in the Columbia River 2.2 miles N NW of the City of Dallesport at 45° 38' 54.43" N, 121° 11' 53.26" W.

This proposed name was submitted by the Confederated Tribes and Bands of the Yakama Nation as part of an effort to replace feature names containing the word "squaw".

The name references a legend story of "two sitting on lap". These islands are within the Yakama Lands and in the Traditional Territories of the Wishxam and Klickitat bands. This location is within the Ceded Lands of the Yakama Nation.



Condon Mountain - Okanogan County



Summit; 3,444 ft elevation, located in the Colville Indian Reservation at 48° 10' 58.99" N, 119° 3' 52.09" W.

This proposed name was submitted by the Confederated Tribes of the Colville Reservation as part of an effort to replace feature names containing the word "squaw".

The feature is located in the traditional territories of the Nespelem Tribe and Okanogan Tribe. The name commemorates the Condon family, a well-established and widely recognized tribal name, particularly in the Kartar Valley.



Aalvic Wahtum - Skamania County



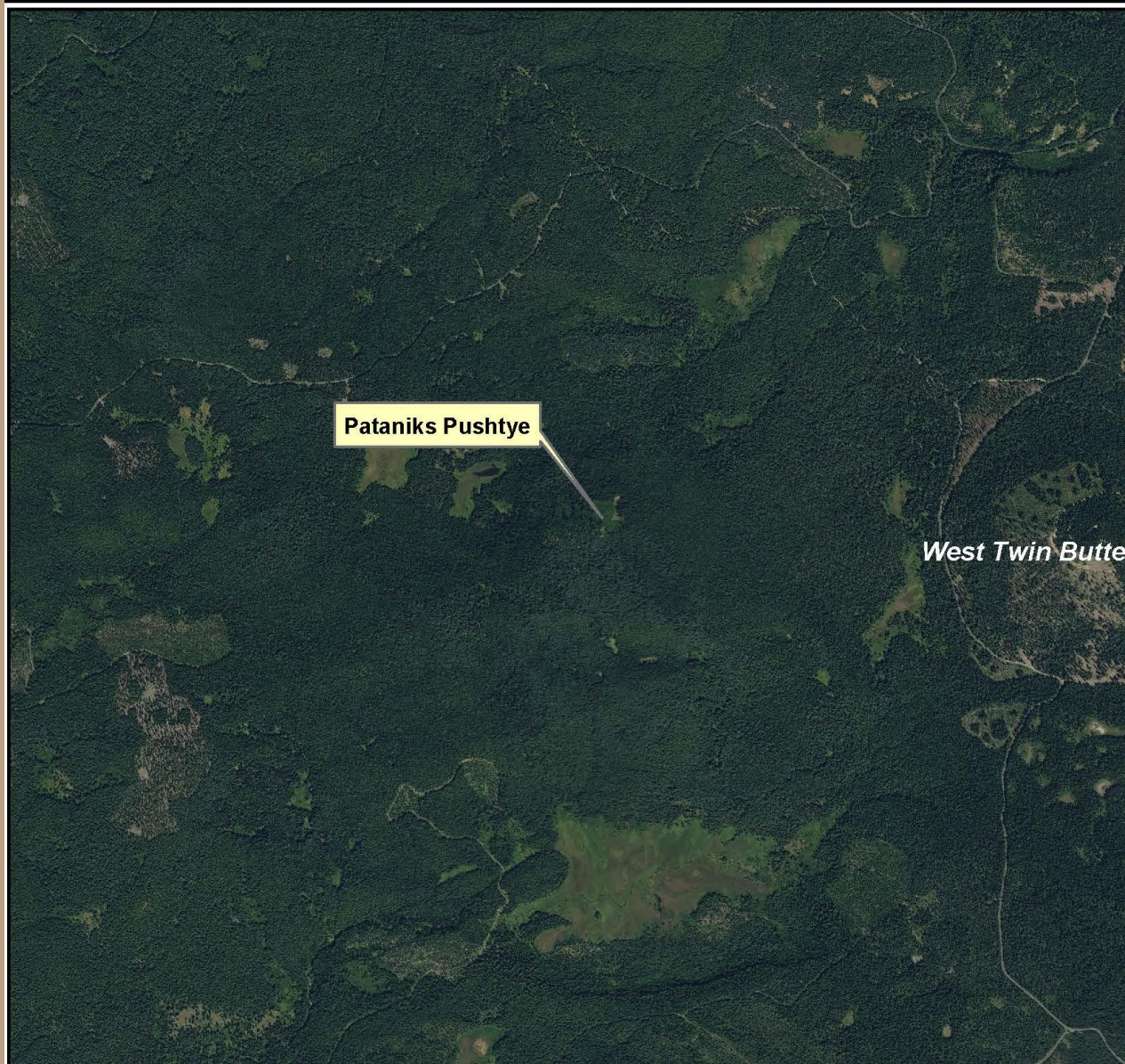
Lake; 3.9 acres located 2.5 miles SW of the City of Stevenson at 45° 40' 25.11" N, 121° 55' 55.12" W.

The name was submitted by the Confederated Tribes and Bands of the Yakama Nation as part of an effort to replace feature names containing the word "squaw".

Lucille Aalvic was a Yakama tribal member who resided in Stevenson and had the Yakama Nation enrollment #1. Lucille was an active tribal member living along the Columbia River during the time when the Bonneville Dam was constructed and removed from her original family site by the US Army Corp. of Engineers. This place is in the traditional territory of the Klickitat.



Pataniks Pushtye - Skamania County



Summit; 4565 ft in elevation, located in the Gifford Pinchot National Forest at 46° 7' 1.39" N, 121° 48' 8.34" W.

The name was submitted by the Confederated Tribes and Bands of the Yakama Nation as part of an effort to replace feature names containing the word "squaw".

Name references the child of the woman in the nearby twin buttes, Lulukash. Yakama legendary stories related to a mother and child. This area is also associated with deer and know for camas and huckleberry harvesting. This place is in the traditional territory of the Klickitat, one of the signatory tribes of the Yakama Nation.



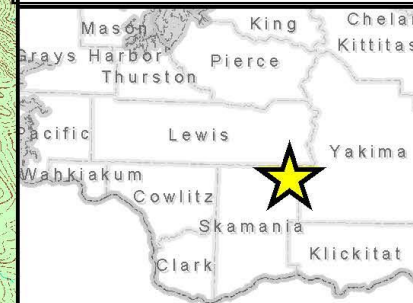
Timla Wapykt - Skamania County



Stream; 2.7 miles long located in the Gifford Pinchot National Forest. Heads at 46° 18' 25.00" N, 121° 38' 37.00" W, then flows E then S to enter the Cispus River at 46° 20' 8.42" N, 121° 40' 17.31" W.

The name was submitted by the Confederated Tribes and Bands of the Yakama Nation as part of an effort to replace feature names containing the word "squaw".

Name means "little heart mountain", and is located in the traditional territory of the Klickitat, one of the signatory tribes of the Yakama Nation.



Shluxiksikswana - Skamania County



Stream; 2.8 miles long, heads in the Gifford Pinchot National Forest at 45° 45' 17.713" N, 121° 41' 28.392" W, flows E to enter the Little White Salmon River at 45° 44' 48.455" N, 121° 38' 20.486" W.

The name was submitted by the Confederated Tribes and Bands of the Yakama Nation as part of an effort to replace feature names containing the word "squaw".

The name originates from the village known as "the eating place" at the end of the small drainage. This is a Klickitat village location that was also visited by Wishxam.

This location is within the Ceded Lands of the Yakama Nation.



Snqilt Creek - Stevens County



Stream; 1.8 miles long; heads on the edge of the Colville National Forest at 48° 53' 42.68" N, 117° 49' 36.95" W and flows SE to enter the Columbia River at 48° 54' 44.00" N, 117° 51' 22.00" W 2 miles W of the town of Northport.

This proposed name was submitted by the Confederated Tribes of the Colville Reservation as part of an effort to replace feature names containing the word "squaw".

"Snqilt" is an Indian word for the area above Little Dalles to Northport, in the traditional territory of the Lakes Tribe.



